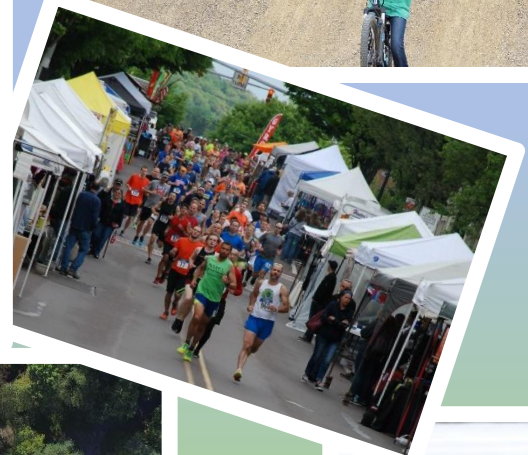


2017 ANNUAL REPORT



REPORT TABLE OF CONTENTS

REPORT TABLE OF CONTENTS.....	2
DIRECTOR’S INTRODUCTION.....	3
MARC HISTORY.....	4
MARC MISSION	6
MARC 2017 COMMISSION MEMBERS.....	7
MARC STAFF	8
MARC MANAGED PROPERTIES.....	9
2017 KEY SUCCESSES.....	11
MONTOUR PRESERVE CONTINUED OPERATION	11
HOPEWELL PARK BIKE JUMPS AREA / PUMP TRACK	12
RIVERSIDE BOROUGH RIVER ACCESS SIGNAGE	14
DANVILLE BOROUGH ‘RIVER TOWN’ DESIGNATION.....	15
EAGLE SCOUT PROJECTS	16
CENTRAL SUSQUEHANNA HAMMERS.....	17
2017 KEY CHALLENGES AND FAILURES	18
RIVER TOWNS RACE SERIES	18
NORTH BRANCH CANAL TRAIL LEGAL DISPUTE	21
EAST BRANCH RECREATION AREA CLOSURE	22
MONTOUR COUNTY PUBLICLY-ACCESSIBLE LANDS.....	23
FUNDRAISING / FINANCIAL STABILITY	24
2018 OUTLOOK.....	25
DIRECTOR’S SUMMARY.....	26
2017 YEAR-END BUDGET AND FINANCIAL STATEMENTS.....	28
2017 SPONSOR / SUPPORTER ACKNOWLEDGMENTS.....	35
2017 RIVER TOWNS RACE SERIES	35
MARC GENERAL OPERATIONS	36
MONTOUR PRESERVE	37
APPENDIX A (MONTOUR COUNTY PARK & TRAIL INVENTORY)	38
APPENDIX B (TRAILS IN MONTOUR COUNTY).....	39

REPORT DISCLAIMER

The Montour Area Recreation Commission’s 2017 Annual Report is intended to provide a summary of the organization’s operations, financial condition and general outlook as of December 31, 2017. This report has been prepared by Bob Stoudt, MARC Director, using information which has not been independently audited or reviewed. Any opinions expressed in this report are those of Stoudt alone and may not represent the opinions of the Montour Area Recreation Commission, its other staff, Commission members or the entities it represents.

DIRECTOR'S INTRODUCTION

It has been my great privilege to direct the efforts of the Montour Area Recreation Commission (MARC) for eight years. As MARC's Director, I've had the opportunity to collaborate with many of the elected officials, business leaders and citizens working diligently to make Montour County, its municipalities, schools and our surrounding region a great place to live, work, learn and play. The combined enthusiasm of these many individuals inspires me to do all I can to make MARC the best it can be.



When I was first hired as MARC's Deputy Director in January of 2010, I had the opportunity to work with Dave Decoteau, MARC's Director. Dave had served as MARC's first (and, at that time, only) Director, having built the organization into a regional asset from what had been only an idea just a few short years before. Dave was MARC's one and only employee; I was hired only because Dave cut his own salary to fund my position. Dave led by example, making it abundantly clear to me that the success of an organization such as MARC was by no means guaranteed. To the contrary, it would continue to exist and succeed only so long as its staff and leadership worked diligently to deliver the assets and services the community desired and by demonstrating the greatest possible frugality and long-term vision for success.

When Dave left MARC in October of 2010 to open the Riverside Adventure Company, MARC returned to a one-person staff. We had one property – the Hess Recreation Area – under our management, but we also directed a number of races as part of our River Towns Race Series. Though we were privileged to have the assistance of the Pennsylvania Conservation Corps (PCC), under the local leadership of Brad Diehl, the PCC program was eliminated by the Commonwealth in 2011. As a result, MARC had no choice but to do all it could with one part-time employee and whatever volunteer help it could muster. It was a daunting challenge to say the least, but the hardship helped lay the groundwork for an operating strategy that continues to this day.

Though MARC begins 2018 with a staff of four part-time hourly employees and six properties under our management, we continue to exist only because of the thriftiness, resourcefulness and dedication of our staff and Commission members and the many community volunteers who share our desire to create and maintain a system of parks, trails, open space and outdoor special events that serve the needs of Montour County's residents and visitors to our region. Our continued existence remains an ongoing challenge – 2017 was a particularly difficult year and we face serious challenges in 2018 – but we will continue to do all we can for as long as we can to make Montour County the place where individuals, families, businesses and organizations choose to be.

It is my honor to work with MARC's staff and Commission members, as well as the many community leaders and volunteers, working toward this common goal. I thank you for reading this 2017 Annual Report and I hope to see you sometime soon at one of the parks or trails in Montour County.

- Bob Stoudt



MARC HISTORY

MARC is a volunteer-led organization, committed to providing the best possible outdoor recreational facilities and programming for the people of Montour County and the area serviced by the Danville Area School District. We live and work here and recognize the many resources our area has to offer. We are dedicated to creating a great place to live, work, play, learn and raise a family.

MARC grew out of the Montour County Recreation Authority (MCRA). The MCRA was originally created as a funding mechanism for the Danville Area Community Center more than thirty years ago. Long after that original purpose was accomplished, it was re-formed to pursue ideas and funding to improve recreation fields, programs, and facilities in Montour County and the Danville Area School District.

For many years, Danville Borough taxpayers funded most of the outdoor recreation in our area – not all, but most. This inequitable funding of community facilities and programs was finally posed as a question, “Why aren’t all municipalities participating in funding recreation?” And, “Why do we build things and never provide for maintaining them?”

In 2002, a change in organizational structure was proposed which would move the responsibility for recreation from an appointed authority to a commission which would be composed of representatives of every participating municipality. These recommendations followed statewide trends in recreation and, more importantly, recreation funding. The Pennsylvania Department of Conservation and Natural Resources (DCNR) had moved toward a system of rewarding regional partnerships with grant opportunities.

In 2003, MCRA assembled a team of volunteers to travel around the state to observe other communities to learn how they ran their organizations. DCNR provided a list of successful, sustained programs that were similar in size to our region. The team found the common threads among successful organizations were partnerships and wide-based community support.

MCRA representatives returned to Montour County to explore options that might be acceptable to local elected leaders and residents. Numerous proposals were presented, including various methods of funding a recreation commission. It eventually became clear that the exact structure of a commission – its funding, scope of responsibilities, organizational structure, etc. – would have to be decided by representatives of whichever municipalities and entities voluntarily chose to participate in the organization; no municipalities would be forced to participate.

A large group meeting was held in March 2004, followed by numerous small group discussions. Some municipalities decided to join with MCRA in the creation of a recreation commission. Others took more of a ‘wait and see’ approach.

The Montour Area Recreation Commission (MARC) formally began to operate upon the signing of an Intergovernmental Agreement of Cooperation by Montour County, Washingtonville Borough, Riverside Borough and the Danville Area School District on May 18, 2005. The Borough of Danville later joined MARC on January 10, 2012.

MARC is structured as a 'multi-governmental organization which is non-profit by intent'. MARC is incorporated in Pennsylvania under 15 Pa C.S., Section 5306, as a Domestic Nonprofit Corporation; MARC is not a 501(c)(3) entity.

Dave Decoteau served as MARC's first Director, serving from MARC's founding in 2005 until October 2010. Dave then stepped down to open the Riverside Adventure Company in Riverside, PA, though he continues to remain actively involved in MARC's operations as a park/trail stewardship volunteer. Bob Stoudt, formerly MARC's Deputy Director, was promoted to Director in October 2010 and continues to serve in that capacity today. Jon Beam joined MARC's staff as Assistant Director in January 2015. Dennis Piatt, MARC's Maintenance Technician, joined the organization in February 2016. Connor Durkin was hired in May 2017 as MARC's Seasonal Maintenance Technician.

MARC MISSION

MARC's mission is 'to make and promote Montour County, PA as a healthy place to live, work and play'.

MARC's stated goals are to:

1. (BUILD AND MAINTAIN) Improve the quality and quantity of outdoor recreational opportunities in and around Montour County, PA
2. (PARTNER) Collaborate with volunteers and public and private partners to create, maintain and promote an interconnected network of trails, parks, natural areas and other green spaces
3. (PROMOTE) Promote the economic, natural and cultural resources of our community
4. (FUND) Create an endowed funding source for the long-term operations of the Montour Area Recreation Commission and the stewardship of Montour County's outdoor recreational resources
5. (ASSIST) Serve as a clearinghouse for information, technical and planning assistance related to outdoor recreation in and around Montour County

MARC 2017 COMMISSION MEMBERS

MARC is governed by a 13-member Commission, comprised of representatives of each member entity, including: five representatives of Montour County, two representatives of Washingtonville Borough, two representatives of Riverside Borough, two representatives of Danville Borough and two representatives of the Danville Area School District. All Commission members are unpaid volunteers and serve three-year terms, renewable at the discretion of the member entities.

The Commission is led by an elected Chairperson, Vice-Chairperson, Treasurer and Secretary. Officer positions are elected annually.

(E = elected official; R = resident)

MONTOUR COUNTY

Commissioner Ken Holdren (Treasurer) (E)
Michael Mills (Chairperson) (R)
Joseph Ward (R)
David Walker (R)
Heather Good (R)

DANVILLE BOROUGH

Kevin Herritt (E)
Greg Kovalick (R)

DANVILLE AREA SCHOOL DISTRICT

Chris Johns (Secretary)
VACANT

WASHINGTONVILLE BOROUGH

Frank Dombroski (Vice-Chairperson) (E)
Tyler Dombroski (E)

RIVERSIDE BOROUGH

Bill Lavage (R)
Dr. Victor Marks (R)



MARC 2017 COMMISSION MEMBERS

BACK ROW (L TO R) Kevin Herritt, Mike Mills, Frank Dombroski, Heather Good, Bill Lavage, Chris Johns
FRONT ROW (L TO R) Greg Kovalick, Bob Stoudt (staff)

MISSING FROM PHOTO: Tyler Dombroski, Commissioner Ken Holdren, Dr. Victor Marks,
Dave Walker, Joe Ward

MARC STAFF

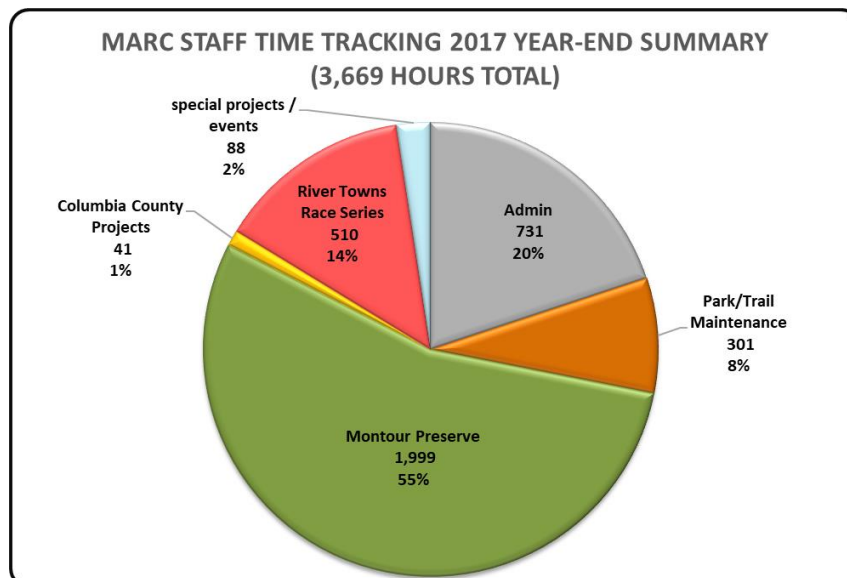
As of December 31, 2017, MARC is staffed by four part-time hourly employees, including: Bob Stoudt, Director; Jon Beam, Assistant Director; Dennis Piatt, Maintenance Technician; and Connor Durkin, Seasonal Maintenance Technician.

All MARC staff members are part-time hourly employees. 2017 hourly labor rates ranged from \$14.00/hour to \$22.00/hour. Staff receive no benefits, no paid holidays and no paid vacation. Staff provide their own vehicles, computers, cell phones and work clothes, without reimbursement. MARC's 2017 payroll compensation, including taxes, totaled \$83,724.94.



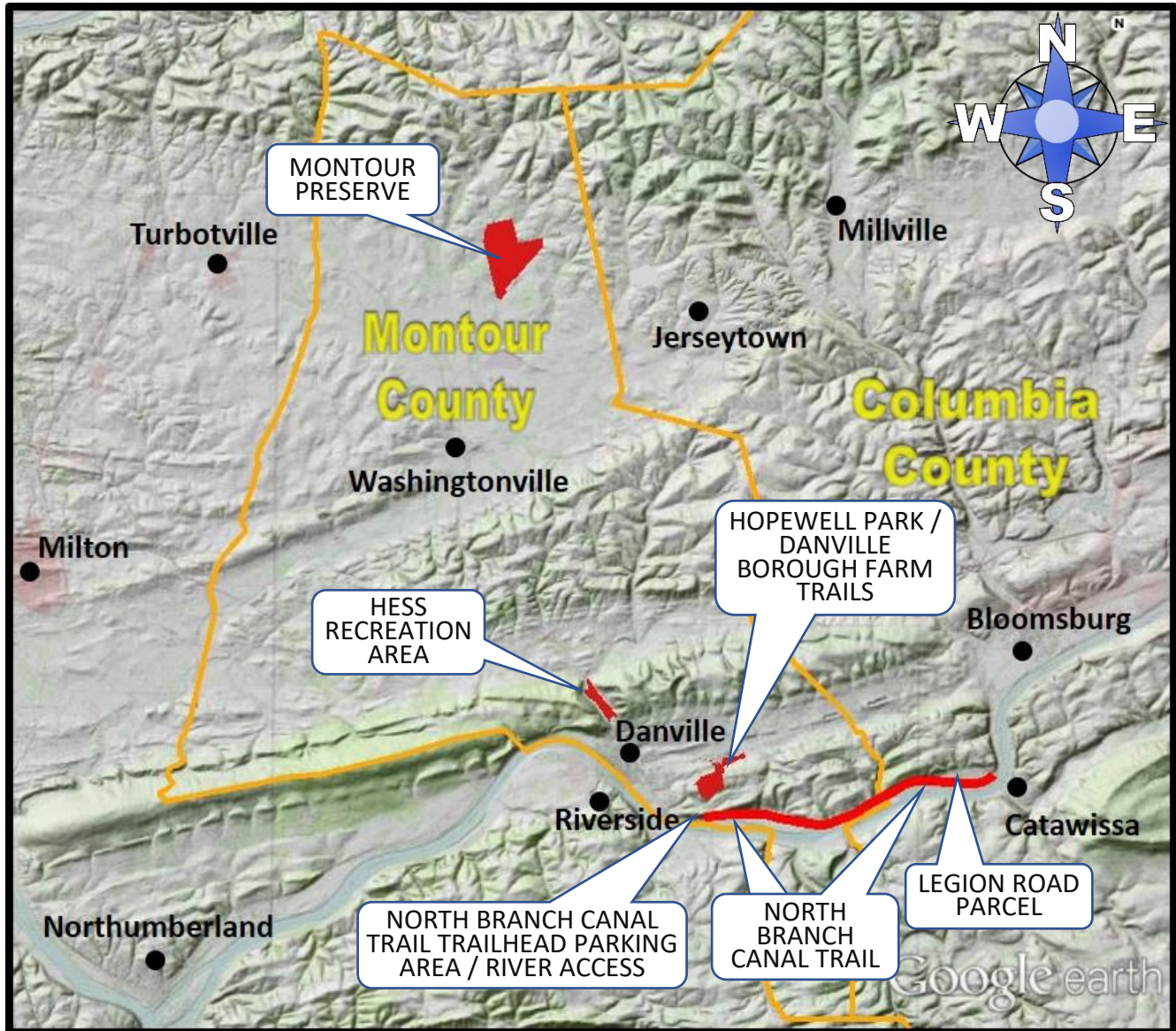
MARC STAFF

(L to R) Bob Stoudt, Jon Beam, Connor Durkin and Dennis Piatt



MARC MANAGED PROPERTIES

As of December 31, 2017, MARC manages six properties in Montour and Columbia Counties, PA. All properties are managed on behalf of other landowners; MARC owns no real estate.



MARC MANAGED PROPERTIES				
PROPERTY	OWNERSHIP	MANAGEMENT STRUCTURE	PROPERTY SIZE (ACRES)	MANAGED SINCE
Hess Recreation Area	Danville Borough	long-term lease	102	2005
Hopewell Park / Danville Borough Farm Trails	Montour County and Danville Borough	memorandum of understanding	180	2013
Legion Road parcel	Montour Township	license agreement	0.6	2015
Montour Preserve	Montour, LLC (Talen Energy)	lease agreement	657	2015
North Branch Canal Trail	Montour County and Columbia County	lease agreements	37	2010
North Branch Canal Trail Trailhead Parking Area / River Access	Montour County	agreement	3	2012

2017 KEY SUCCESSES

MONTOUR PRESERVE CONTINUED OPERATION



MARC assumed responsibility for the operation and maintenance of portions of the Montour Preserve in Anthony Township, Montour County, in October 2015. It did so under the terms of an annual lease agreement with Montour, LLC (Talen Energy), renewable for up to ten one-year terms.

MARC has worked since late 2014 to raise the funds needed to operate and maintain the Montour Preserve. As of December 31, 2017, MARC has raised \$529,604.25 in donations and pledges from roughly 500 donors, including a total of \$300,000 from the Commonwealth of Pennsylvania through the Department of Conservation and Natural Resources (DCNR).

In 2017, MARC spent a total of \$102,410.26 to operate and maintain the Montour Preserve.

Without MARC's efforts to raise the required funding and maintain / operate the site, it is likely that most of the recreational amenities at the Montour Preserve would have been removed or closed, including the picnic pavilions, boat launch, restrooms, sugar shack, fossil pit, etc. MARC remains committed to securing the long-term future of the site and continues to seek additional funding and other support to accomplish this important goal.

MAJOR 2017 PROJECT SUPPORTERS



HOPEWELL PARK BIKE JUMPS AREA / PUMP TRACK



Under the volunteer leadership of Dave Decoteau, MARC oversaw the construction of the new bike jumps area and pump track at Hopewell Park in Mahoning Township, Montour County. Long underutilized, the site in recent years has become the trailhead parking area for the ever-expanding network of trails at the Hopewell Park / Danville Borough Farm mountain bike trail system. With roughly eight miles of trails at the site, ranging from entry-level to extremely challenging, the site is rapidly becoming a destination for regional mountain biking enthusiasts.

The newly created bike jumps area and pump track, as well as a new bike repair station, greatly expand upon the appeal of the site for users of all ages. The site is freely open to the public from dawn to dark every day. For more information about the site, including trail maps and other features, please visit:

<http://montourrec.com/hopewell-parkdanville-borough-farm/>

In 2017, MARC spent a total of \$5,273.76 to construct the new bike jumps area and pump track. MARC's costs were entirely covered by a grant from the Central Susquehanna Valley Board of Realtors and a donation by Service 1st Federal Credit Union. MARC estimates that an additional \$5,000 - \$8,000 in labor and equipment usage was donated to the project.

MARC is extremely grateful to Dave Decoteau (Riverside Adventure Company / Earthscapes) and Elijah Evans (Elijah Evans Excavating) for their substantial donations of labor and equipment usage to help make the site a reality. MARC also thanks the members of the Central Susquehanna Hammers interscholastic mountain biking team, the Central Susquehanna Valley Board of Realtors and many other volunteers for their many hours of volunteer service at the site.



MAJOR 2017 PROJECT SUPPORTERS



RIVERSIDE BOROUGH RIVER ACCESS SIGNAGE

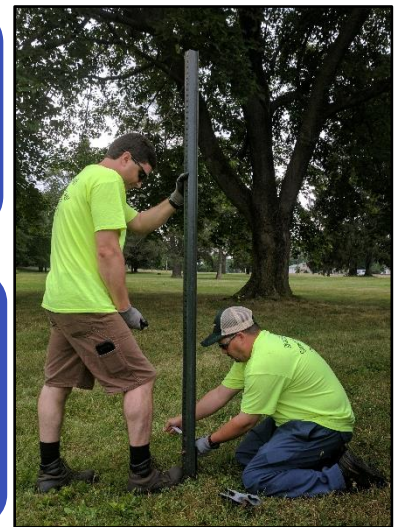
One of the more frequent comments MARC hears from visitors to Montour County (and often from local residents) is “I don’t know where to access the river. How do you know where you can launch and take out? There are no signs anywhere!”

MARC recognizes the North Branch Susquehanna River as one of the key natural resources in Montour County and all of northeastern Pennsylvania. Generations of residents have used the river for transportation, commerce, natural resource extraction and other purposes, but the river today is valued more as an asset for recreation. MARC and other partners have been working to improve access to the river and public awareness of its potential for recreation.

In partnership with the Borough of Riverside, MARC staff and members of the Borough of Riverside’s Streets Department installed a variety of signs at and around the Borough of Riverside’s river access, located off of D&H Avenue / 1st Street. Signs now call attention to the site from the river, identify parking areas for site users and identify those areas where parking is not allowed.

MARC hopes to install similar signage at other river access sites in 2018, if funding allows.

In 2017, MARC spent a total of \$1,282.73 for labor and materials for the Riverside Borough River Access signage project. A donation from Service 1st Federal Credit Union covered all of MARC’s costs for the project. MARC estimates an additional \$500 in labor and materials were donated to the project.



MAJOR 2017 PROJECT SUPPORTERS



BOROUGH OF RIVERSIDE

DANVILLE BOROUGH 'RIVER TOWN' DESIGNATION

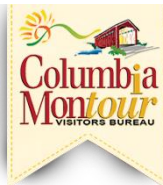


As with the Riverside Borough River Access Signage project, MARC continues to make a concerted effort to highlight the great potential of the North Branch Susquehanna River for recreation and other uses. Though the river can be a mixed blessing for communities along its banks – providing tranquil beauty and recreational opportunities, but also the potential for disastrous flooding – MARC and a number of regional partners are working to highlight the positive impacts the river has for our region's 'river towns'.

The Susquehanna Greenway Partnership's River Towns program works with communities throughout the Susquehanna Greenway to envision, prioritize, and implement community-led projects that reconnect residents back to the Susquehanna River, create trails and river accesses, and interpret the community's natural and cultural assets. It is based on four principles: 1) Respect and work with the nature of the river; 2) Strengthen connections with the River; 3) Involve a broad base of people with the River and their River Town; 4) Foster sustainable economic development.

To that end, MARC and regional partners worked together in 2017 to secure the designation of the Borough of Danville as an official 'River Town'. MARC and our partners will work in 2018 and beyond to leverage this designation to market and promote the community to residents and visitors alike.

MAJOR 2017 PROJECT SUPPORTERS



BOROUGH OF
DANVILLE



MONTOUR
COUNTY

EAGLE SCOUT PROJECTS

As noted throughout this report, MARC relies heavily upon the many volunteers who freely give their time and talents to help MARC accomplish its many goals. Perhaps no group of volunteers has been more consistently involved with MARC's projects than the local troops of the Boy Scouts of America. In fact, as noted in the table below, MARC has benefitted from eighteen Eagle Scout candidate projects since 2010, with at least three more projects currently in the planning stages.

In 2017, five Eagle Scout candidates completed projects at MARC-operated properties, including three at the Montour Preserve and two at Hopewell Park. MARC is sincerely grateful for the hard work of these young men, their families, friends and fellow Scouts and looks forward to continuing this great working relationship with the many Boy Scout troops in Montour and Columbia Counties.

EAGLE SCOUT CANDIDATE PROJECTS		
SCOUT	YEAR	PROJECT
Dylan Friday	2010	Hess Recreation Area Tree Identification Signage and Guide
Frank Ulrich	2011	Hess Recreation Area Trail Bridge
Ian Maize	2011	Hess Recreation Area Bike Skills Area Rehabilitation
Joe Baker	2012	Hess Recreation Area Trailhead Kiosks
Alek Matunis	2013	Hess Recreation Area Entrance Rehabilitation and Garden
David Gunther	2014	North Branch Canal Trail Trailhead Sign and Picnic Tables
Porter Snowden	2014	Hess Recreation Area Benches
Aaron Keehan	2015	Hess Recreation Area Picnic Tables and Handicapped Parking Areas
Randy Marks	2015	North Branch Canal Trail Construction
Hunter Latranyi	2015	North Branch Canal Trail Trailhead Garden and Site Cleanup
Goody McCormick	2015	Hopewell Park Orienteering Course
Dave Kratzer	2015	North Branch Canal Trail Picnic Tables
Nate McDonald	2015	North Branch Canal Trail Benches
Bradley Yeich	2017	Montour Preserve Bike Racks
Shawn Marks	2017	Montour Preserve Hummingbird Trail Rehabilitation
Ethan Bulger	2017	Montour Preserve Braille Trail Rehabilitation
Spencer Snowden	2017	Hopewell Park Trail Signage
Eli Henning	2017	Hopewell Park Gazebo Restoration

MAJOR 2017 PROJECT SUPPORTERS



BOY SCOUTS OF AMERICA®



CENTRAL SUSQUEHANNA HAMMERS



In partnership with the Danville Area School District and numerous volunteers and sponsors, MARC is proud to have played a supporting role in the creation of the Central Susquehanna Hammers interscholastic mountain biking team. With a team mission of 'fun, fitness, fellowship, stewardship and the development of individuals of strong mind and body via a love for self and our world', the Hammers are the perfect extension of MARC's ongoing efforts to develop and maintain park and trail facilities for use by locals and visitors alike.

The Hammers typically practice at the Hopewell Park / Danville Borough Farm mountain bike trail system and help MARC care for the site. MARC hopes some of the team members might one day become the next generation of parks and recreation leaders in and around Montour County.

To learn more about the team or become involved, please visit:

www.HammersMTB.com

MAJOR 2017 PROJECT SUPPORTERS



2017 KEY CHALLENGES AND FAILURES

RIVER TOWNS RACE SERIES

2017 was a disappointing year for MARC's River Towns Race Series. Having conducted some of our races for as many as 14 years, MARC had hoped that by 2017 the series would generate significant revenue to be used for park and trail maintenance and other special programming. Unfortunately, that has proven not to be the case.

As the below table and chart illustrate, most of MARC's races saw their peak attendance in the 2012 – 2014 period. Since that time, our race attendance numbers have dropped off significantly. In several cases, the declines have been so bad as to necessitate the cancellation of the races for 2018. In particular, MARC has made the decision to discontinue both the River Towns Half-Marathon and the Chilli Challenge, arguably our two marquee events. From a peak number of seventeen races in the 2011 season, MARC plans to direct or partner with other organizations to host only five races in the 2018 season.

In reality, MARC's difficulties with the River Towns Race Series are several-fold. Key challenges include:

1. The market for races in central Pennsylvania has become super-saturated. When MARC first began directing races around 2005, few other organizations were hosting races in our area. However, as the years passed, more and more races and other special events were introduced in and around Montour County. While that's a great thing for racers and our region as a whole, it has presented a significant challenge for older races to continue to attract consistent numbers of racers.
2. Sponsorship revenues for the River Towns Race Series have declined dramatically in recent years. This is a result of declining state support for tourism efforts as well as a side-result of MARC's expanding scope of work. While most sponsors might have directed their support to one or more of MARC's River Towns Race Series races in past years, they are now being asked to direct their support to the Montour Preserve or other pressing efforts. Additionally, as many of our region's major employers close or shift to distant ownership, fewer entities are offering sponsorships or other financial support.
3. MARC has failed to adapt its race offerings quickly enough to the changing tastes of racers. Whereas Dave Decoteau, MARC's first Director, was (and is) a charismatic promoter of races and special events, having both the first-hand race experience and the personality to attract fellow participants, Bob Stoudt's skills are better suited to planning and project management. While Stoudt has successfully leveraged the talents of Dave Decoteau, Dave Walker and other MARC Commission members and volunteers to sustain most races and add new offerings such as the Montour 24 Endurance Runs, this has not been enough to offset the larger losses.

4. Permitting, regulations and insurance costs for races have steadily increased in recent years. In particular, races that use any state-designated roadways are heavily burdened by these costs. While MARC does not dispute that racer and motorist safety are paramount, MARC can no longer afford to produce any road-based races. The River Towns Half-Marathon is the prime example of this point. In 2017, MARC paid a total of \$5,751.16 for traffic control (to Flagger Force, Danville Police and Danville Fire Police) for the River Towns Half-Marathon. That amounted to 33% of the race registration fees collected. More than any other issue, this cost made the race no longer viable for MARC and led to the race's cancellation in 2018.
5. Changes to staff employment status and overtime regulations have impacted MARC's labor costs for the River Towns Race Series. Because all MARC staff are part-time, hourly employees (whereas Dave Decoteau had been classified as full-time salaried until 2010), MARC is mandated to pay time-and-one-half overtime rates for any hours worked in excess of 40 hours per week. Of the 245.75 hours of overtime worked by Stoudt in 2017, 154 hours (63%) were for River Towns Race Series events.
6. Volunteerism at MARC special events has declined, likely for a variety of reasons, but at least in part as a result of MARC's increased staffing. Stoudt is of the opinion that fewer of MARC's regular volunteers are assisting with MARC's races and special events because of the perception that MARC's paid staff can and should work the events. MARC's staff have done so to ensure the success of the events, but the increased labor costs have turned formerly profitable events into losses for MARC.

2017 RIVER TOWNS RACE SERIES ACCOUNTING (FINAL AS OF 12/31/17)											
	INCOME/EXPENSE	2016/2017 Awards Ceremony	Humdinger	River Towns Half Marathon	Scale the Trail 4 Kids	Old Forge 5k	Montour 24 Endurance Runs	Hopewell Challenge MTB	Chilli Challenge	River Towns Race Series (general)	TOTALS
INCOME	Racer Registration Fees		13,560.00	17,275.00			2,352.01		3,650.00		36,837.01
	Sponsorships		1,250.00	750.00	150.00	1,798.03			1,100.00		5,048.03
	Commissioners' Grant		4,162.84	3,609.76	-	-	-	-	1,334.99	891.72	9,999.31
EXPENSES (GRANT ELIGIBLE)	T-shirts/ Promotional		(2,730.00)	(3,250.00)					(780.00)		(6,760.00)
	Advertising		(1,432.84)	(359.76)					(554.99)	(891.72)	(3,239.31)
	Event Timing		(1,097.00)	(1,141.00)					(1,000.00)		(3,238.00)
	MARC labor (Stoudt) w/taxes	(298.00)	(2,616.44)	(3,421.04)	(178.80)	(771.82)	(1,996.60)	(143.04)	(1,034.06)	(721.16)	(11,180.96)
	MARC labor (Beam) w/ taxes	-	(159.68)	(781.14)	-	-	-	-	-	-	(940.82)
	MARC labor (Piatt) w/ taxes	-	(75.40)	(779.22)	-	-	(231.66)	-	-	-	(1,086.28)
	MARC labor (Durkin) w/ taxes	-	-	(226.06)	-	(155.90)	-	-	-	-	(381.96)
	Awards/Prizes	(345.50)	(1,792.04)	(2,268.40)					(9.00)	(632.19)	(5,047.13)
	EMS		(100.00)						(250.00)		(350.00)
	Food/Drink	(257.50)	(1,618.75)	(2,104.23)		(85.95)			(357.41)		(4,423.84)
	Insurance		(629.29)	(486.33)					(486.33)		(1,601.95)
	Misc. Supplies & Fees		(611.08)	(1,018.69)		(55.08)	(123.75)		(133.65)	(1,565.03)	(3,507.28)
	Porta-Potties		(470.00)	(710.00)							(1,180.00)
	Refunds			(120.00)		(105.00)					(225.00)
	Tent/ Equipment Rental		(848.80)	(573.75)							(1,422.55)
	Traffic Control		(594.24)	(5,751.16)							(6,345.40)
	NET PROFIT/LOSS	(901.00)	4,197.28	(1,356.02)	(28.80)	624.28	0.00	(143.04)	1,479.55	(2,918.38)	953.88

2009 - 2017 RIVER TOWNS RACE SERIES REGISTRATIONS ⁽¹⁾

RACE	2009	2010	2011	2012	2013	2014	2015	2016	2017
Chilli Challenge ⁽²⁾	183	241	225	166	169	168	0	123	70
Half-Marathon ⁽³⁾	139	325	468	574	538	608	472	389	297
Humdinger ⁽⁴⁾	146	283	350	408	566	358	309	308	300
Mon-Tour (RTCC) ⁽⁵⁾	130	110	215	218	0	151			
Montour 24						109	140	218	204
Old Forge 5k							200	202	110
Robbins Run	106	132	278	233	239	249	141	78	

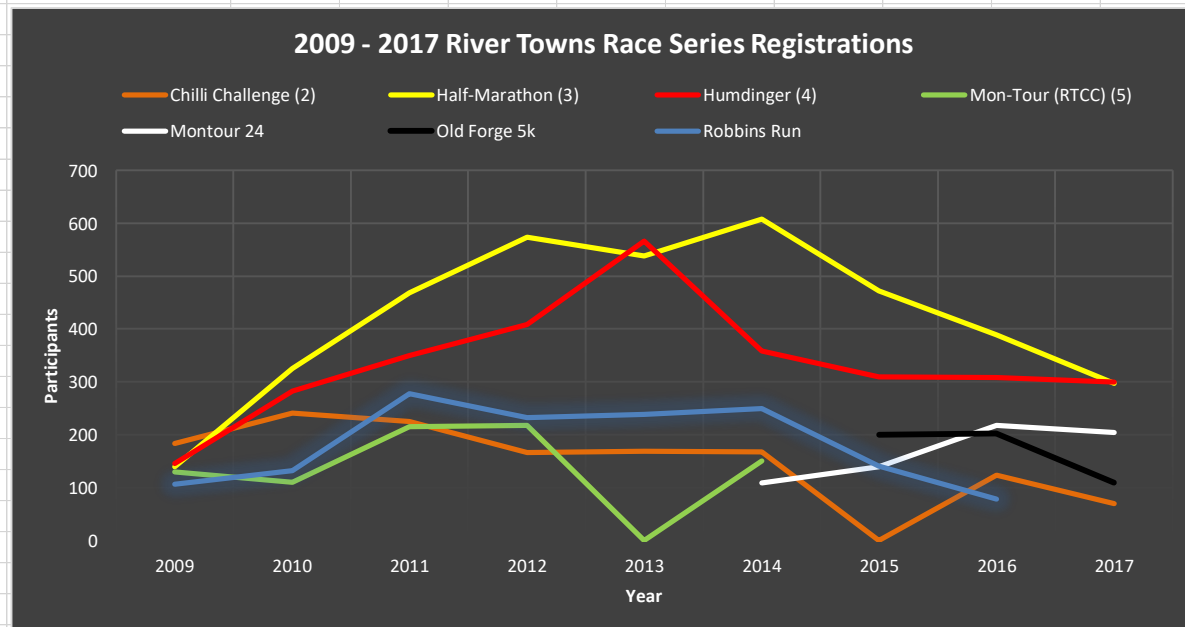
NOTES: (1) chart excludes events held fewer than four times or not in past three years

(2) Chilli Challenge not held in 2015 because of Montour Preserve management change

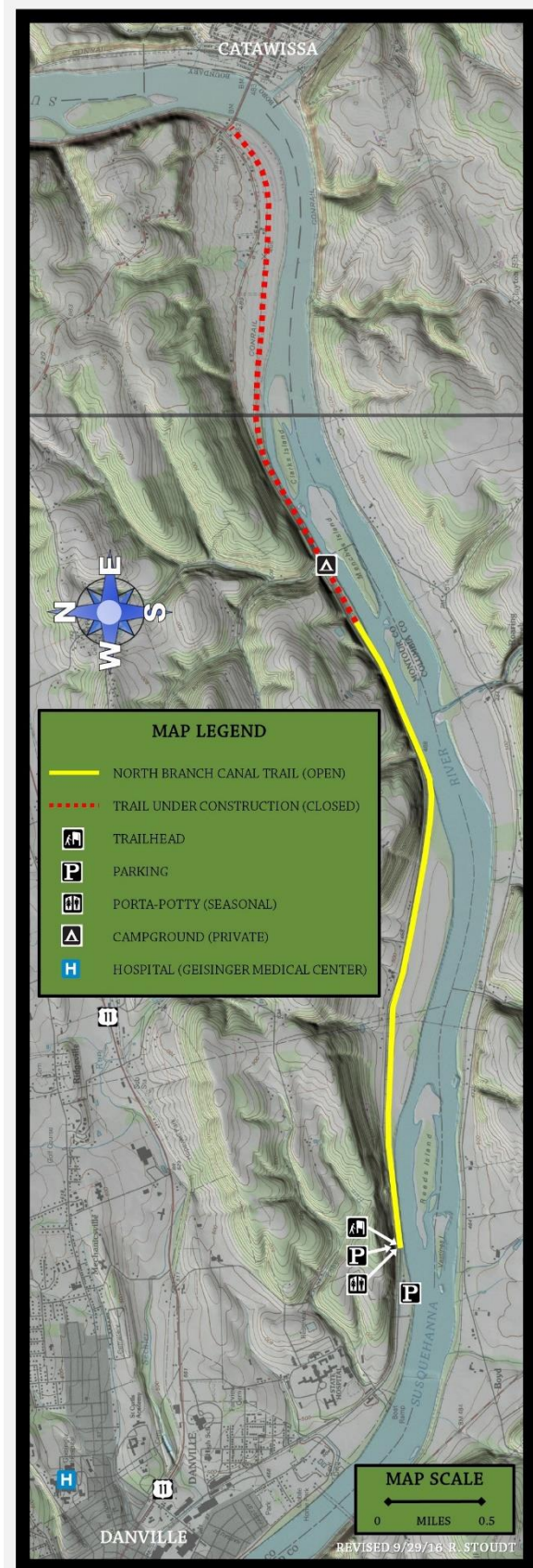
(3) Until 2015, River Towns Half-Marathon numbers included River Towns Marathon participants (avg. 80)

(4) Humdinger venue changed in 2014 (Geisinger policy change)

(5) Mon-Tour (River Towns Cycling Classic) not held in 2013 (permitting problems)



NORTH BRANCH CANAL TRAIL LEGAL DISPUTE

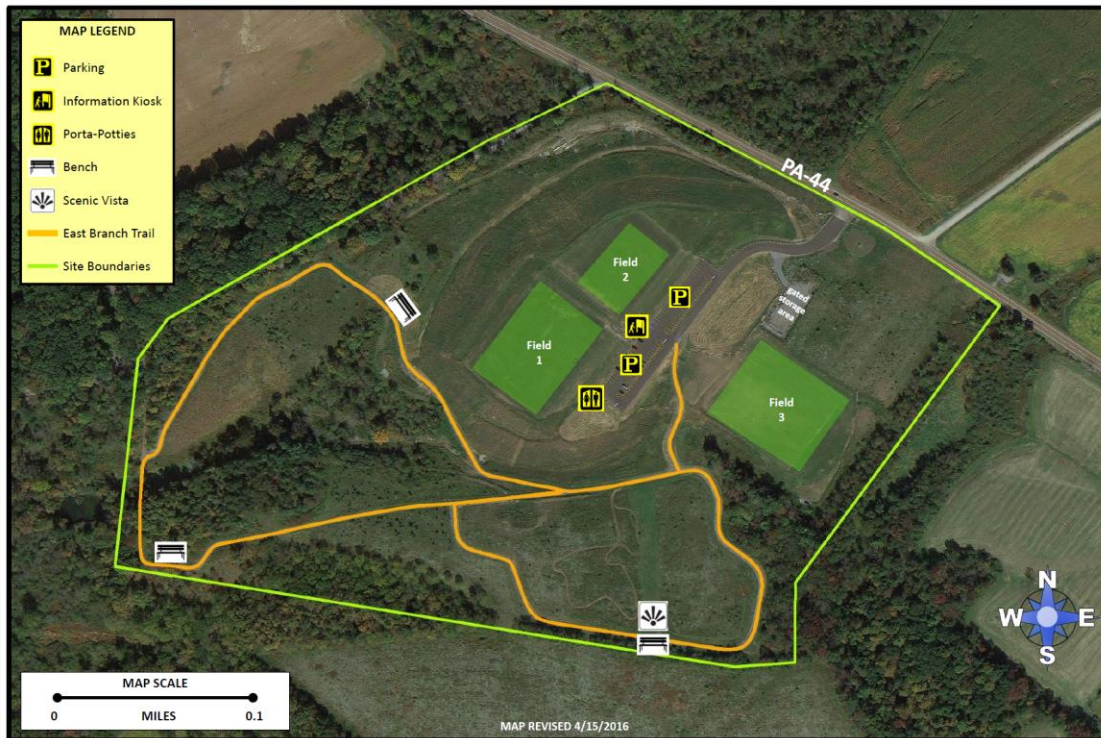


The 2016 completion of the construction of the initial 6.2 mile-long section of the North Branch Canal Trail in Montour and Columbia Counties was one of MARC's most important successes to-date. The project has been a long-time objective of MARC and numerous state and regional partners, occupying significant amounts of MARC's time (both staff and volunteer) and resources for many years.

Unfortunately, an ongoing legal dispute with an adjacent landowner in Cooper Township, Montour County, has indefinitely delayed the planned opening of the trail corridor. MARC has been able to open and maintain the initial 3.5 mile-long section of the trail in Mahoning Township and Cooper Township, Montour County and expects to open an additional 2.2 miles of trail in Montour Township, Columbia County in early spring 2018, but a 0.5 mile-long segment near the middle of the trail must remain closed until the legal dispute is resolved.

MARC can make no accurate estimation of when the matter might be resolved and can do nothing to speed the process.

EAST BRANCH RECREATION AREA CLOSURE



The 58 +/- acre East Branch Recreation Area in Madison Township, Columbia County was constructed by PPL Generation, LLC and opened to the public in 2012. With two (later three) multi-use sports fields, paved parking lots and roughly one mile of gravel trails on the site, the property was a welcome addition to the outdoor recreational offerings in the Columbia / Montour County region.

In 2012, MARC entered into a lease agreement with PPL Generation, LLC to operate and maintain portions of the site, with full funding for MARC's services paid by PPL Generation, LLC. MARC's care for the site continued in a similar arrangement through September 2017, spanning the transition of site ownership from PPL Generation, LLC to Talen Generation, LLC. However, in 2017, MARC was informed that funding for site maintenance would be discontinued and MARC would be required to provide whatever funding it might need to care for the site.

MARC reached out to local officials and potential funding partners for assistance to keep the site open to the public, but was unsuccessful in finding any sources of funding. Because usage of the site was relatively light and because the need for supplemental funding (approximately \$7,500/year) would be ongoing for the life of the site, MARC could not make a compelling case for support, especially with so many other ongoing demands for limited governmental resources.

As a result, MARC notified Talen Generation, LLC of its intent to discontinue the lease agreement. All park-related materials were removed from the property by early September 2017 and the site is now closed to the public.

So far as Stoudt knows, the East Branch Recreation Area is the first park or trail property to cease to exist during MARC's watch and is an unsettling indication of possible things to come.

MONTOUR COUNTY PUBLICLY-ACCESSIBLE LANDS

In 2017, MARC was notified by representatives of Talen Energy that all lands in Montour and Columbia Counties owned by Talen Energy (or its subsidiaries) that had previously been open to hunting and public access, excluding the Montour Preserve, would be closed to hunting and public access. Talen Energy (or its subsidiaries) were preparing to sell or auction a number of the parcels of land and needed to prepare the properties for transfer to other owners.

Talen Energy (or its subsidiaries) owned approximately 6,100 +/- acres of land in Montour and Columbia Counties, generally in the area north and east of the Montour coal-fired power plant in the vicinity of the Montour Preserve. The lands had formerly been owned by PPL (or its subsidiaries) and much of the land, roughly 4,100 +/- acres, had for many years been open to hunting or public access.

Because MARC is deeply concerned with retaining as much publicly-accessible land in and around Montour County as possible, Stoudt reached out to numerous local, regional and state-level organizations and philanthropists for assistance in acquiring or otherwise protecting some of the higher-priority lands that were to be sold or auctioned. Unfortunately, despite many follow-up conversations, Stoudt was unable to secure any funding or convince any entities to acquire or otherwise protect any of the affected lands. In general, the lands were deemed to be of little to marginal conservation value and whatever limited funding might exist at the regional or state levels would be better used elsewhere.

As a result, during the course of 2017, Montour and Columbia Counties lost approximately 3,500 +/- acres of publicly-accessible lands (the 657 +/- acre Montour Preserve remains open to the public). Of this amount, approximately 600 +/- acres lie in Columbia County; approximately 2,900 +/- acres lie in Montour County. Many of the parcels of land have been sold or auctioned to private ownership. Additional parcels are expected to be sold in the future. At the time of this writing, it is unknown by MARC how much land Talen Energy (or its subsidiaries) might still own in the vicinity of the Montour Preserve and Montour Plant.

In an attempt to determine how significant a loss this has been to outdoor recreation in Montour County, Stoudt compiled all available information regarding publicly-accessible lands in Montour County (see Appendix A). To the best of Stoudt's knowledge, it is believed that at the start of 2017, approximate 1,708 +/- acres of Montour County lands were protected as officially designated parks, publicly-owned and accessible lands or privately-owned but publicly-accessible lands (the 657-acre Montour Preserve, privately owned by Montour, LLC (a Talen Energy subsidiary)). An additional 2,900 acres of lands owned by Talen Energy (or its subsidiaries) were also publicly-accessible. In all, it is believed by Stoudt that a total of 4,608 +/- acres of land in Montour County were publicly-accessible at the start of 2017. With a total land area of Montour County of approximately 84,600 acres, this would mean that at the start of 2017, approximately 5.4% of Montour County lands were publicly-accessible. With the closure of the roughly 2,900 acres of lands owned by Talen Energy (or its subsidiaries), only 1,708 +/- acres of land in Montour County remain publicly-accessible at the end of 2017. In other words, **during the course of 2017, Montour County lost 63% of its publicly-accessible lands**. As of December 31, 2017, only 2.0% of Montour County's lands remain publicly-accessible.

FUNDRAISING / FINANCIAL STABILITY

A common theme that runs through the several key failures identified in this report is a lack of funding. Despite MARC's best efforts, after more than twelve years of operation, MARC is no nearer today than it was twelve years ago to being financially self-sufficient. The causes of this are several-fold.

1. MARC is structured as a multi-governmental entity, but it does not have the traditional taxing authority of a governmental entity to fund its operations. Instead, MARC receives not less than \$10,000 in annual funding from Montour County (\$35,000 in 2017, including a \$10,000 grant from the Montour County Commissioners' Tourism Fund (Hotel Tax) to advertise and promote the River Towns Race Series and a \$25,000 grant from Montour County's Act 13 (Marcellus Shale Impact Fee) funding). MARC also receives voluntary annual contributions from its members (in 2017, \$500 from Riverside Borough to MARC's general funds and \$250 from Washingtonville Borough for the Montour Preserve). In all, MARC can be assured of only \$10,000 in annual funding from its member entities; MARC must secure all other required funding from grants, donations, fees and other sources.
2. MARC's status as a multi-governmental entity, as opposed to a more traditional 501(c)(3) non-profit organization, hinders its ability to solicit tax-deductible donations. MARC has attempted to work around this difficulty by establishing funds at the Central Susquehanna Community Foundation where donors may make tax-deductible donations (to the extent allowed by law) which may be passed through to MARC as grants for eligible expenses. Unfortunately, some potential donors are unwilling to work through such an arrangement.
3. MARC has, from its very beginning, taken on financial burdens and maintenance obligations that other entities declined. Whether it is the Hess Recreation Area in Danville which was proposed for closure before MARC stepped in to keep it open or the Montour Preserve that Talen Energy had similarly proposed for partial closure, MARC is bound by its founding Intergovernmental Agreement of Cooperation to be the organization dedicated to the protection and care of parks and trails in Montour County. As a result, for better or worse, MARC has chosen to bear a number of difficult burdens that other entities chose to decline. Our current financial condition is, in large part, a result of those decisions.

2018 OUTLOOK

MARC's outlook for 2018 is challenging at best. We begin the year with a balance of only \$13,888.45 in our checking and savings accounts, all of which is already earmarked or obligated to particular projects; MARC begins 2018 with zero discretionary funds in our account. As of June 30, 2017 (the most recent fund balances available), MARC has balances of \$1,709.35 in our MARC pass-through fund and \$112,331.12 in our Montour Preserve pass-through fund at the Central Susquehanna Community Foundation. We are anticipating an additional \$210,000 in grant funding from DCNR for the Montour Preserve.

By late 2017, MARC was well aware of the dire forecast for 2018 and began to take steps to prepare for the difficult times. MARC has discontinued two unprofitable races – the River Towns Half-Marathon and the Chilli Challenge – and will direct only one race in 2018; it will partner with other entities to host four other races. Stoudt has proposed changes at the Hess Recreation Area to reduce annual maintenance costs and has proposed the conversion from mowed lawn to wildflower meadow of up to 5.7 acres at the Hess Recreation Area, Hopewell Park and Montour Preserve. Stoudt has also proposed to further cut any remaining discretionary spending, including porta-potty service at the North Branch Canal Trail and MARC's support for several special events held in the Danville area.

Though MARC believes it has enough funding in hand or pledged to allow it to operate the Montour Preserve for roughly three more years, what MARC does not have is sufficient funding for all other obligations. As a result, 2018 must be a year of increasingly tough decisions for MARC. If MARC is unable to generate enough income to cover its expenses – whether through fees, donations, grants, etc. – MARC will have no choice but to cease operations at some or all of the properties it manages. MARC does not have the authority to borrow funds (nor would it do so to pay for routine operating expense), so when funding is exhausted, there is no alternative but for MARC to cease operations.

DIRECTOR'S SUMMARY

As I pulled together the information needed for this report, I found myself going through a range of emotions. MARC's staff and Commission members can be justifiably proud of the variety of outdoor recreational opportunities that now exist in Montour County, in large part because of our sustained efforts and the ongoing support of the many volunteers, businesses and organizations that see merit in our work. However, as 2017 comes to a close, I realize that our gains are now hanging by the slimmest of threads and I have a deep sense of foreboding for what 2018 may hold in store for us.

Though Montour County may be the smallest county in Pennsylvania, off the radar for most beyond our borders, we live in a globally-connected world and, for better or worse, our destinies are largely tied to forces beyond our control. We've watched as long-time corporate pillars of our community have restructured or relocated, in many cases taking with them the spirit of philanthropy that helped sustain many of the non-profit organizations working to care for our environment and our fellow citizens. We've watched as our state and federal government become increasingly polarized and dysfunctional, repeatedly targeting parks and the environment for cuts. We've watched as governments at all levels struggle to cope with drug addiction and related issues that damage our communities while further redirecting funds that might have otherwise gone to support parks and programs that sustain and enhance our communities.

I think often of the story of a little boy walking by a dam. He's minding his own business, probably moving toward someplace he needs to go or something he needs to do. Out of the corner of his eye, the boy sees a small leak in the dam. He knows this is a problem, but he's sure there must be someone nearby, certainly more qualified than he is, who will come to take care of the problem. The boy looks around, calling for help, but no one answers. Concerned by what he sees, he does what he can, stepping up to the dam and plugging the small hole with his finger until someone better suited for the job can come to help. However, to his great concern, a new hole opens near the first one. He stretches his arm as far as he can to plug the new leak, calling more loudly for help. Soon enough, a third hole opens near the ground and the boy plugs it with the toe of his shoe. Inevitably, a fourth and a fifth hole appear, overwhelming the boy's ability to address the problem. The boy is now faced with the awful decision of whether to try to run for safety, perhaps dooming the dam to failure, or to stay for whatever consequence may come.

I think you can probably see where I'm going with this. MARC has been working for more than twelve years to serve Montour County, putting our 'fingers' in whatever holes in the dam we find. So far, we've been able to sustain the Hess Recreation Area and the Montour Preserve while adding other regional amenities. With the significant support of our volunteers and funding partners, we've willed into existence the North Branch Canal Trail, the Hopewell Park / Danville Borough Farm mountain bike trails / bike jumps area and pump track and a number of races and other special events.

But, in 2017, we came to the painful realization that we'd run out of 'fingers' and found ourselves beginning to be overtaken by the waters behind the dam. We've now lost the East Branch Recreation Area, 63% of the publicly-accessible lands in Montour County, the River Towns Half-Marathon, the Chilli Challenge and, perhaps most importantly, the sense that we'll always find another 'finger' to stop the next leak.


Despite the best of intentions, I do not believe MARC can long be sustained by the five entities we represent. It may be only a matter of time until the discretionary grant funding MARC receives from Montour County is no longer available and the County has no alternative funding to offer. It is unrealistic to expect that the local municipalities will increase taxes to provide funding to MARC, so it will be up to us to cut every possible non-essential cost and redouble our efforts to find financial support elsewhere.

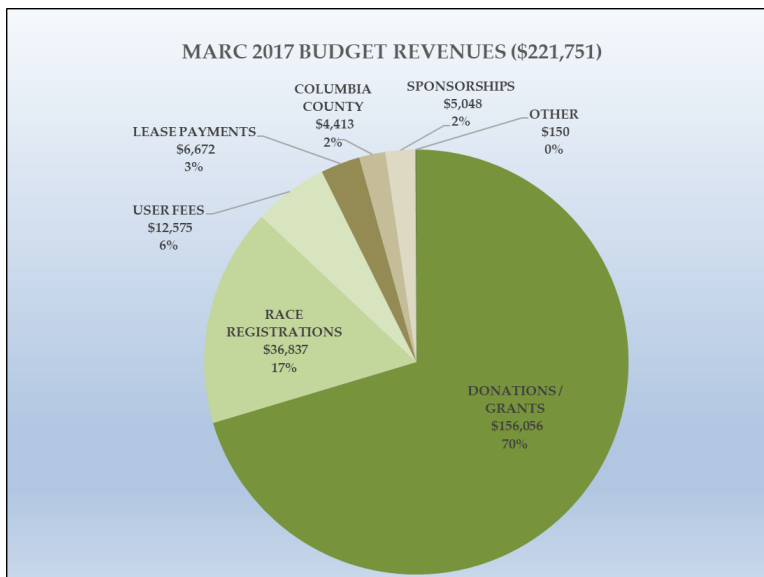
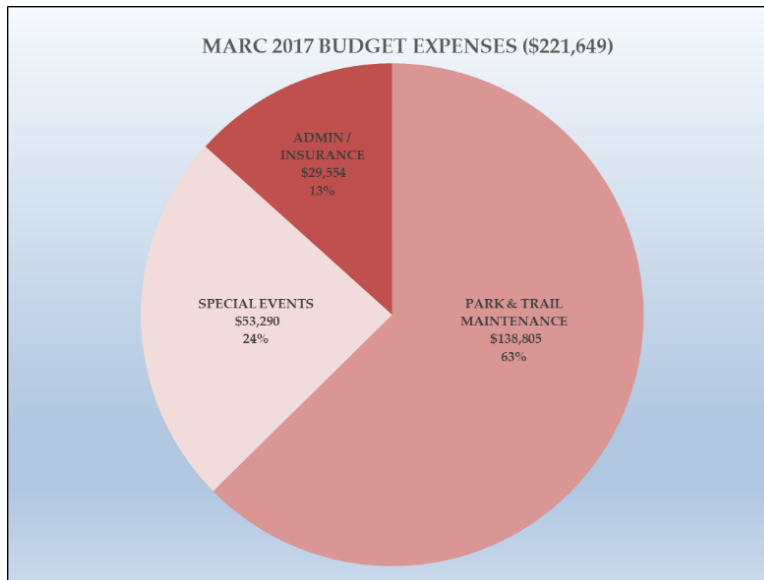
Too many people have worked too hard for too long to lose the gains we've achieved, but we're going to need some significant help if we're to continue the work we've begun. If you're in a position to help, we'd love to hear from you.

Thank you for reading the Montour Area Recreation Commission's 2017 Annual Report and thank you for whatever you do to help make Montour County a healthy place to live, work and play.

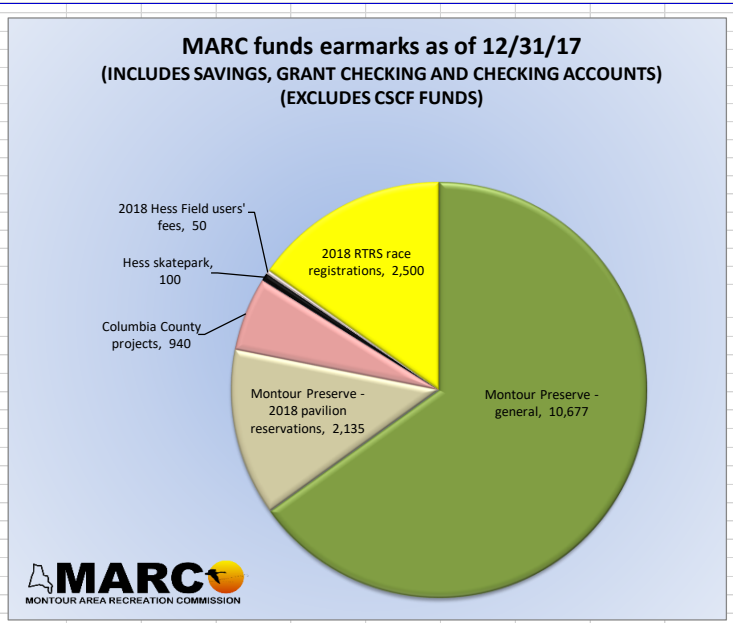
- Bob


2017 YEAR-END BUDGET AND FINANCIAL STATEMENTS

<div>  <div> 2017 MARC BUDGET - YEAR-END FINAL (NOT AUDITED) MINIMUM FUNDING REQUIREMENTS (DEFERRAL OF ALL NON-ESSENTIAL MAINTENANCE) NOTE: MONTOUR PRESERVE ACCOUNTING IS KEPT SEPARATE FROM ALL OTHER ACCOUNTING BUDGET APPROVED 11/14/16; YEAR-END INFORMATION UPDATED 1/9/18 </div> </div>									
EXPENSE	BUDGETED AMOUNT	YEAR-END ACTUAL	YEAR-END ACTUAL VS. BUDGET	FUNDING SOURCES	BUDGETED AMOUNT	YEAR-END ACTUAL	YEAR-END ACTUAL VS. BUDGET	BUDGETED LINE ITEM SURPLUS/ (DEFICIT)	YEAR-END ACTUAL LINE ITEM SURPLUS/ (DEFICIT)
PARK & TRAIL MAINTENANCE	Montour Preserve	\$ (100,000.00)	\$ (102,410.26)	102.4%	DCNR grant funding	90,027.39	100.03%		
					pavilion reservations	10,620.00	111.79%	6,061.75	10,676.71
					donations direct to MARC (excludes CSCF funds)	6,377.83	1275.57%		
					carryover starting Montour Preserve funds balance	6,061.75	100.00%		
	MONTOUR PRESERVE TOTAL EXPENSES	\$ (100,000.00)	\$ (102,410.26)	102.4%	MONTOUR PRESERVE TOTAL INCOME	\$ 113,086.97	106.6%	\$ 6,061.75	\$ 10,676.71
	Hess Recreation Area	\$ (11,500.00)	\$ (14,487.92)	126.0%	user fees, other	\$ 2,800.00	69.8%	\$ (8,700.00)	\$ (12,532.92)
	East Branch Recreation Area	\$ (6,700.00)	\$ (3,524.27)	52.6%	Talen Energy lease agreement*	\$ 9,000.00	74.1%	\$ 2,300.00	\$ 3,148.21
	North Branch Canal Trail (Montour Co. portion)	\$ (4,000.00)	\$ (2,918.18)	73.0%		\$ -	185.0%	\$ (4,000.00)	\$ (2,733.18)
	Columbia County Projects (incl. NBCT, Montour Twp. parcel)	\$ (2,000.00)	\$ (4,413.00)	220.7%		\$ 2,000.00	220.7%	\$ -	\$ -
	Hopewell Park/Borough Farm Trails	\$ (1,800.00)	\$ (7,489.99)	416.1%	Columbia County; reimbursements	\$ -		\$ (1,800.00)	\$ (1,816.23)
SPECIAL EVENTS	Tools & Supplies (Incl. Equipment Repair)	\$ (1,100.00)	\$ (1,110.44)	100.9%	PA Realtors grant (\$3,000); Service 1st donation (\$2,273.76); other (\$400)	\$ -		\$ (1,100.00)	\$ (1,110.44)
	River Drive Parcel (NBCT parking)	\$ (1,000.00)	\$ (1,167.72)	116.8%		\$ -		\$ (1,000.00)	\$ (1,167.72)
	Riverside Borough River Access improvements	\$ (600.00)	\$ (1,282.73)	213.8%		\$ -		\$ -	\$ (0.00)
	River Towns Race Series (includes all labor and expenses)	\$ (45,000.00)	\$ (50,930.48)	113.2%	donations (Service 1st)	\$ 600.00	213.8%	\$ -	\$ (0.00)
					race registration fees	\$ 47,000.00	78.4%	\$ 13,000.00	\$ 933.88
					sponsorships	\$ 1,000.00	504.8%	\$ -	\$ -
	Special Projects & Events	\$ (2,000.00)	\$ (2,359.93)	118.0%	Montour Co. Commissioners' Hotel Tax Fund (advertising) donations	\$ 10,000.00	100.0%	\$ (1,400.00)	\$ (1,509.93)
	Admin / Misc. Other (includes Stoudt admin labor)	\$ (15,000.00)	\$ (18,528.25)	123.5%		\$ 600.00	141.7%	\$ (15,000.00)	\$ (18,528.25)
	Insurance (D&O, General & Workers' Comp)	\$ (8,300.00)	\$ (7,750.00)	93.4%		\$ -		\$ (8,300.00)	\$ (7,750.00)
	Accounting	\$ (1,500.00)	\$ (1,420.00)	94.7%		\$ -		\$ (1,500.00)	\$ (1,420.00)
ADMIN / INSURANCE	Office Supplies	\$ (1,000.00)	\$ (444.16)	44.4%		\$ -		\$ (1,000.00)	\$ (444.16)
	Dues & Fees	\$ (1,000.00)	\$ (1,142.00)	114.2%		\$ -		\$ (1,000.00)	\$ (1,142.00)
	Public Notices	\$ (900.00)	\$ (269.75)	30.0%		\$ -		\$ (900.00)	\$ (269.75)
					Montour Co. Act 13 funding	\$ 25,000.00	100.0%	\$ 25,000.00	\$ 25,000.00
					unrestricted donations	\$ 5,400.00	196.3%	\$ 5,400.00	\$ 10,598.14
					other miscellaneous income	\$ 150.01		\$ -	\$ 150.01
	TOTAL EXPENSES (EXCLUDING MONTOUR PRESERVE)	\$ (103,400.00)	\$ (119,238.82)	115.3%	TOTAL INCOME (EXCLUDING MONTOUR PRESERVE)	\$ 103,400.00	105.1%	\$ -	\$ (10,574.35)
	MONTOUR PRESERVE TOTAL EXPENSES	\$ (100,000.00)	\$ (102,410.26)	102.4%	MONTOUR PRESERVE TOTAL INCOME	\$ 106,061.75	106.6%	\$ 6,061.75	\$ 10,676.71
	GRAND TOTAL EXPENSES	\$ (203,400.00)	\$ (221,649.08)	109.0%	GRAND TOTAL INCOME	\$ 209,461.75	105.9%	\$ 6,061.75	\$ 102.36
OTHER INCOME									
TOTALS									

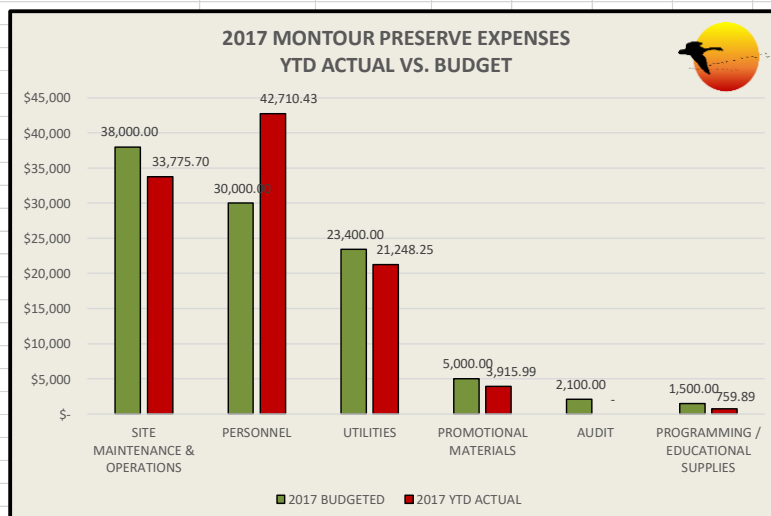
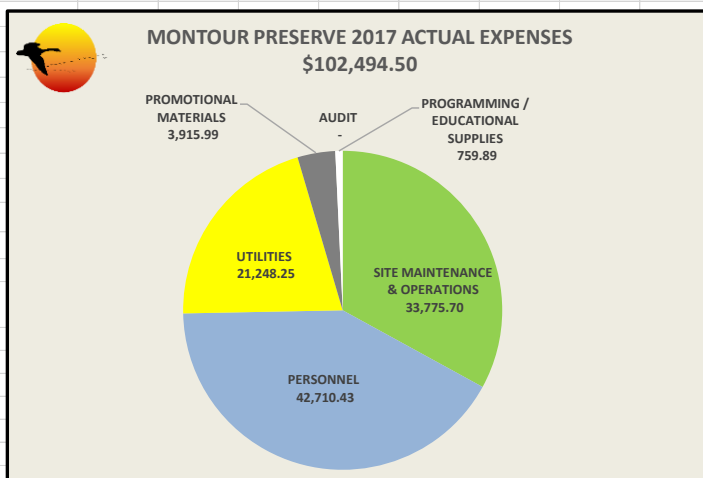
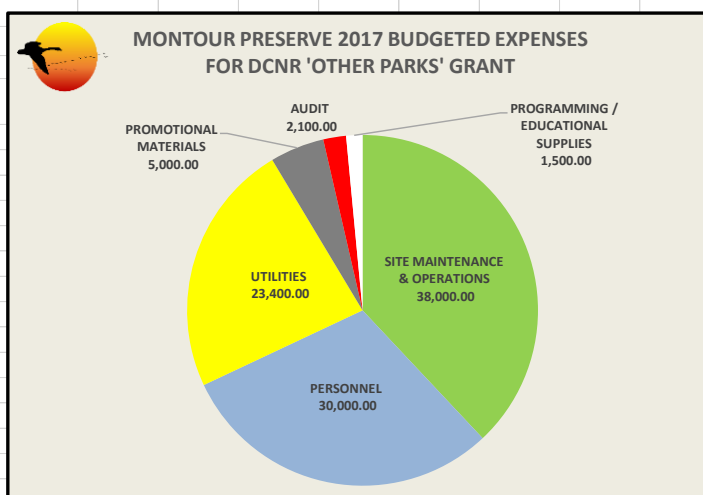


EARMARK CATEGORIES	AMOUNT
DCNR grant - Montour Preserve	
Montour Preserve - general	10,677
Montour Preserve - 2018 pavilion reservations	2,135
Montour Co. Commissioners' grant (RTRS)	
Columbia County projects	940
Hess skatepark	100
2018 Hess Field users' fees	50
2018 RTRS race registrations	2,500
UNRESTRICTED	
TOTAL RESTRICTED	16,401
COMBINED ACCOUNTS BALANCE (12/31/17)	13,888
ACCOUNTS RECEIVABLE	
Geisinger RTRS sponsorship	1,000
DCNR 2017 grant closeout	10,000
	11,000
ACCOUNTS PAYABLE	



<div>  <div> MONTOUR PRESERVE 2017 BUDGETING VS. ACTUAL EXPENSES REVISÉ 1/9/2018 R. STOUTT </div> </div>		
EXPENSE	2017 BUDGETED	YEAR-END ACTUAL
personnel	30,000.00	42,710.43
SITE MAINTENANCE & OPERATIONS	cleaning service	3,000.00
	HVAC system maintenance	5,500.00
	lawn care	13,500.00
	parking lot / road maintenance	2,500.00
	security system	1,200.00
	sewage pumping	1,300.00
	snow plowing	1,500.00
	supplies / misc.	5,400.00
	water testing	1,500.00
	wildlife management	2,600.00
UTILITIES	electric	17,000.00
	internet service	2,300.00
	telephone	1,900.00
	trash service	1,500.00
	website hosting / email service	700.00
	promotional materials	5,000.00
	programming & educational supplies	1,500.00
	audit (funds earmarked; not yet paid)	2,100.00
	insurance (grant ineligible)	1,500.00
	real estate taxes (grant ineligible)	6,500.00
EXPENSE TOTAL		\$ 108,000.00 \$ 102,410.26

<div> MONTOUR PRESERVE 2017 DCNR GRANT BUDGETING VS. ACTUAL EXPENSES REVISÉ 1/9/2018 R. STOUTT </div>		
EXPENSE	2017 BUDGETED	2017 YTD ACTUAL
SITE MAINTENANCE & OPERATIONS	38,000.00	33,775.70
PERSONNEL	30,000.00	42,710.43
UTILITIES	23,400.00	21,248.25
PROMOTIONAL MATERIALS	5,000.00	3,915.99
AUDIT	2,100.00	-
PROGRAMMING / EDUCATIONAL SUPPLIES	1,500.00	759.89
EXPENSE TOTAL		\$ 100,000.00 \$ 102,410.26



2:17 PM

01/16/18

Accrual Basis

Montour Area Recreation Commission
Statement of Financial Position
As of December 31, 2017

	Dec 31, 17
ASSETS	
Current Assets	
Checking/Savings	
Service 1st - Savings	8.77
Service 1st - Grant Checking	0.21
Service 1st FCU	13,879.47
Total Checking/Savings	13,888.45
Accounts Receivable	
Accounts Receivable	1,000.00
Total Accounts Receivable	1,000.00
Other Current Assets	
Grants Receivable	
DCNR Grant	10,000.00
Total Grants Receivable	10,000.00
Prepaid Expenses	
Payroll & Taxes	142.09
Total Prepaid Expenses	142.09
Total Other Current Assets	10,142.09
Total Current Assets	25,030.54
Other Assets	
CSCF - Trusted Funds	
Montour Preserve Fund	112,331.12
CSCF - Trusted Funds - Other	1,709.35
Total CSCF - Trusted Funds	114,040.47
Total Other Assets	114,040.47
TOTAL ASSETS	139,071.01
LIABILITIES & EQUITY	
Liabilities	
Current Liabilities	
Other Current Liabilities	
Advance Payments Received	
Hess Field User Fees	50.00
Preserve Reservations	2,135.00
Race Registrations	2,500.00
Total Advance Payments Received	4,685.00
Conditional Contributions	
Columbia County Projects	939.55
County Tourism Grant -RTRS	0.69
DCNR Montour Preserve	1,868.65
Preserve Donations & Income	31,053.89
Skatepark Deposits	100.00
Total Conditional Contributions	33,962.78
Payroll Liabilities	1,302.09
Total Other Current Liabilities	39,949.87
Total Current Liabilities	39,949.87
Total Liabilities	39,949.87

No Assurance Provided

Page 1

2:17 PM

01/16/18

Accrual Basis

Montour Area Recreation Commission
Statement of Financial Position
As of December 31, 2017

	<u>Dec 31, 17</u>
Equity	
Retained Earnings	106,693.18
Net Income	-7,572.04
Total Equity	<u>99,121.14</u>
TOTAL LIABILITIES & EQUITY	<u>139,071.01</u>

No Assurance Provided

Page 2

2:16 PM

01/16/18

Accrual Basis

**Montour Area Recreation Commission
Statement of Financial Activities
December 2017**

	Dec 17	Jan - Dec 17
Ordinary Income/Expense		
Income		
Donations Received		
Montour Preserve Donations	0.00	5,697.83
Donations Received - Other	3,075.00	16,164.63
Total Donations Received	3,075.00	21,862.46
Field User Fees	0.00	1,880.00
Grants		
Columbia Co Projects Grant	51.92	4,413.00
County Tourism Grant -RTRS	782.63	9,999.31
DCNR Montour Preserve	11,078.35	98,131.35
Hopewell Projects Grant	0.00	3,000.00
Montour Co Act 13 Contribution	0.00	25,000.00
Total Grants	11,912.90	140,543.66
Miscellaneous Income	0.00	36.79
Pavilion Reservations	0.00	0.00
River Town Race Series		
Event Sponsorship	100.00	6,048.03
River Town Race Series - Other	0.00	36,837.01
Total River Town Race Series	100.00	42,885.04
Talen EBRA Lease	0.00	6,667.02
Total Income	15,087.90	213,874.97
Gross Profit	15,087.90	213,874.97
Expense		
Administrative/Overhead		
Dues & Subscriptions	0.00	1,142.00
Insurance	0.00	7,750.00
Legal Notices	0.00	269.75
Miscellaneous	39.66	940.67
Office Expense	34.00	506.56
Payroll Expenses	4,283.94	83,724.94
Professional Fees	0.00	1,420.00
Total Administrative/Overhead	4,357.60	95,753.92
Montour Preserve	8,736.42	59,949.13
Park & Trail Maintenance		
Columbia Cnty -NBCT	40.00	3,428.80
General -Tools & Supplies	0.00	1,110.44
Hess Recreation Area	405.00	10,468.67
Hopewell Park	544.00	2,822.65
North Branch Canal Trail	125.00	2,075.98
River Drive Parcel	100.00	1,062.50
Talen - EBRA	0.00	3,029.52
Total Park & Trail Maintenance	1,214.00	23,998.56
Projects		
Hopewell Bike Jumps	0.00	3,468.26
Riverside River Access	0.00	728.29
Total Projects	0.00	4,196.55

No Assurance Provided

Page 1

2:16 PM

01/16/18

Accrual Basis

Montour Area Recreation Commission
Statement of Financial Activities
December 2017

	<u>Dec 17</u>	<u>Jan - Dec 17</u>
Special Events		
Other Events	0.00	212.95
RTRS	810.42	37,380.56
Total Special Events	810.42	37,593.51
Total Expense	15,118.44	221,491.87
Net Ordinary Income	-30.54	-7,616.70
Other Income/Expense		
Other Income		
Interest Income	5.97	44.66
Total Other Income	5.97	44.66
Net Other Income	5.97	44.66
Net Income	-24.57	-7,572.04

No Assurance Provided

Page 2

2017 SPONSOR / SUPPORTER ACKNOWLEDGMENTS

The Montour Area Recreation Commission is honored to acknowledge the following businesses, organizations and individuals who provided funding, goods or services in support of our work in 2017. Every effort has been made to acknowledge all donors and MARC sincerely regrets any errors or omissions.

2017 RIVER TOWNS RACE SERIES



Montour County Commissioners' Tourism Fund

MARC GENERAL OPERATIONS



Anonymous

Ms. Renee' Carey

Danville Heritage Festival

Danville Summer Camps

East End Fire Company

Mr. & Mrs. David & Penny Gingrich

Wayne Kashner

Montour County Democratic Party (in memory of Walt Schultz)

Riverside Borough

MONTOUR PRESERVE


anonymous (numerous)
Anthony Township
David & Melania Balzer
Robert & Pamela Barni
Catherine Bastian
Sandy Beiler & Karen Konvolinka
Tom & Heather Benner
Bloomsburg Elks
Dane & Mary Sue Boush
Kathleen Braim
Jeffrey & Melissa Brandt
Elizabeth Brewer
George & Michele Burgett
California Grange #941
Canoe Susquehanna
Central Pennsylvania Woodland Owners Association
Central Susquehanna Builders Association
Central Susquehanna Intermediate Unit
Central Susquehanna Technical Group
Chillisquaque Limestone Watershed Association
Columbia County Conservation District
Jim & Theresa Cook
Danville Area Community Center
Danville Kiwanis Club
Xavier Davis
William Dickerson
Tyler Dombroski
Philip & Natalie Anne Easton
Mel & Carol Endy
Donna & Bill Faust
Caleb & Alexis Fetterman
Laurie Fitzpatrick
Jill Fodness
Robert Fought
Matthew & Bethany Gerdy
Greater Danville Area Industrial Development Corp.
Todd & Angie Hack
Jillian Hancock
Richard L. Harry
Richard & Judith Hassall
Ray & Erin Hayes
Brent Heintzelman
Heintzelman family
Randy & Sally Hess
Dr. Evan Houston
John R. Kauffman Jr. Public Library
Andrew & Bonnie Keister
Rodney B. & Susan Keller

Daniel & Kathy Kilgus (in memory of Ross Dopp)
J. Mark King
Susan Klein
Lewis Kleiner
James Jr. & Susan Kline
Angela Lankford
Edward & Virginia Long
Dr. Victor & Linda Marks
Victor & Linda Marks Fund
Walter & Ruthe May
Cindy McBeth-Collins
John McCann & Dr. Jill Largent
Korey & Emily Milheim
Stephen & Patricia Miller
Timothy & Betty Minninger
Montour County Conservation District
Mooresburg Presbyterian Church VBS
John Mullen
North East Empire, Inc.
North Montour Sportsmen's Association
Northumberland / Point Twp. Senior Action Center
Karol & Mark Pasquinelli
Pennsylvania Master Naturalist
Pennsylvania Trapper Association, District 7
Gary & Pamela Rearick
Connie & Lynn Reece
Joshua & Danelle Reinsburrow
P.E. Roberts
Chris & Debra Sensenig
Eric Showers
Douglas E. & Susan S. Smith
Sneaky Hollow Baits
Harry & Linda Snyder
Linda Snyder (for Sandy Snyder)
Linda Snyder (for Shirley Slifer)
Susanna Stetor
Robert & Dr. Rebecca Stoudt
Debra Tappe
L.H. & C.L. Tarr
Turbotville Area Lions Club
Linda & Holly Unger
United States Gypsum (USG) Washingtonville
Stephen & Lisa Warriner
Washingtonville Borough
Wayne E. & Harriet D. Watts
Dennis & Barbara Wenrich
Woods Plumbing & Heating
Dr. Frederick O. Yohn

APPENDIX A (MONTOUR COUNTY PARK & TRAIL INVENTORY)

MONTOUR COUNTY PARK & TRAIL INVENTORY		
SITE	SIZE (ACRES)	TRAILS (MILES)
ANTHONY TOWNSHIP BALLFIELDS / EXCHANGE POOL	5	
BUCKNELL UNIVERSITY CHILLISQUAQUE CREEK NATURAL AREA	61	
CANAL PARK	0	
DANVILLE AREA HIGH SCHOOL / DANVILLE AREA PRIMARY SCHOOL / DACC	55	1.0
DANVILLE AREA MIDDLE SCHOOL	14	
DANVILLE SOCCER PARK	35	
DELONG PARK	5	
F.Q. HARTMAN RECREATION AREA	37	
GEISINGER STEWARDSHIP FOREST	303	8.2
HESS RECREATION AREA	102	3.6
HOPEWELL PARK / DANVILLE BOROUGH FARM TRAILS	183	8.0
MEMORIAL PARK	2	
MONKEY DRIFT TRAIL	-	0.7
MONTGOMERY PARK	2	
MONTOUR PRESERVE	657	7.8
NORTH BRANCH CANAL TRAIL (MONTOUR COUNTY PORTION ONLY)	27	4.0
NORTH BRANCH CANAL TRAIL TRAILHEAD PARKING AREA	3	
PA FISH & BOAT COMMISSION DANVILLE ACCESS	5	
PA STATE GAMELANDS #115 (MONTOUR COUNTY PORTION ONLY)	190	
RIVERFRONT PARK	0.5	
RIVERFRONT TRAIL	-	1.0
SUNNYBROOK PARK	8.0	
WASHIES' PLAYGROUND	13.0	
ZAMBONI PARK	0.3	
TOTALS	1,708	34.3

APPENDIX B (TRAILS IN MONTOUR COUNTY)

TRAILS IN MONTOUR COUNTY								
								
TRAIL NAME	SITE	TRAIL LENGTH (MILES)	TRAIL SURFACE	DIFFICULTY	SUITABLE FOR USERS WITH LIMITED MOBILITY	BICYCLES ALLOWED	DOGS ALLOWED	NOTES / COMMENTS
Monkey Drift Trail	Danville Borough	0.7	sidewalk / pavement	moderate	no	yes	yes	sidewalk-based trail through Danville Borough, connecting the Hess Recreation Area to the Riverfront Trail
Riverfront Trail	Danville Borough	1.0	sidewalk	moderate	no	yes	yes	sidewalk-based trail through Danville Borough, paralleling the North Branch Susquehanna River
Black Bear Trail	Geisinger Stewardship Forest	3.9	dirt	challenging	no	yes	yes	challenging trail designed for mountain biking, trail running and hiking
Bobcat Trail	Geisinger Stewardship Forest	0.4	dirt	challenging	no	yes	yes	challenging trail designed for mountain biking, trail running and hiking
Copperhead Trail	Geisinger Stewardship Forest	2.4	dirt	challenging	no	yes	yes	challenging trail designed for mountain biking, trail running and hiking
Deer Path Trail	Geisinger Stewardship Forest	0.1	dirt	challenging	no	yes	yes	challenging trail designed for mountain biking, trail running and hiking
Little Bear Trail	Geisinger Stewardship Forest	0.3	dirt	challenging	no	yes	yes	challenging trail designed for mountain biking, trail running and hiking
Possum Trail	Geisinger Stewardship Forest	0.4	dirt	challenging	no	yes	yes	challenging trail designed for mountain biking, trail running and hiking
Squirrel Trail	Geisinger Stewardship Forest	0.2	dirt	challenging	no	yes	yes	challenging trail designed for mountain biking, trail running and hiking
Turkey Trail	Geisinger Stewardship Forest	0.5	dirt	challenging	no	yes	yes	challenging trail designed for mountain biking, trail running and hiking
Mahoning Flats Trail	Hess Recreation Area	0.8	dirt / gravel / forest / wooden boardwalk	moderate	no	yes	yes	trail passes through wetlands and streamside forests; trails are seasonally wet
Old Reading Line Trail	Hess Recreation Area	1.0	gravel	easy	yes	yes	yes	trail crosses the Lucile Roberts Covered Bridge on the old Reading Line Railroad grade
Robbins Trail	Hess Recreation Area	1.2	dirt / gravel	moderate	no	yes	yes	trail parallels Mahoning Creek on old railroad grade
Banana Split Trail	Hopewell Park / Danville Borough Farm	0.2	dirt	challenging	no	yes	yes	trail designed for mountain bike use, but open to pedestrians
Bowie Blast Trail	Hopewell Park / Danville Borough Farm	0.2	dirt	challenging	no	yes	yes	trail designed for mountain bike use, but open to pedestrians
Bullet Baby Trail	Hopewell Park / Danville Borough Farm	0.3	dirt	extreme	no	yes	yes	trail designed for mountain bike use, but open to pedestrians
Deep Hollow Trail	Hopewell Park / Danville Borough Farm	0.3	dirt	challenging	no	yes	yes	trail designed for mountain bike use, but open to pedestrians
Down and Dirty Trail	Hopewell Park / Danville Borough Farm	1.0	dirt	challenging	no	yes	yes	trail designed for mountain bike use, but open to pedestrians
Dump Road Trail	Hopewell Park / Danville Borough Farm	0.3	dirt	challenging	no	yes	yes	trail designed for mountain bike use, but open to pedestrians
Eight Ball Trail	Hopewell Park / Danville Borough Farm	1.1	dirt	challenging	no	yes	yes	trail designed for mountain bike use, but open to pedestrians
Firm Foundation Trail	Hopewell Park / Danville Borough Farm	0.5	dirt	challenging	no	yes	yes	trail designed for mountain bike use, but open to pedestrians
Herky Jerk Trail	Hopewell Park / Danville Borough Farm	0.2	dirt	challenging	no	yes	yes	trail designed for mountain bike use, but open to pedestrians
Junk in the Trunk Trail	Hopewell Park / Danville Borough Farm	0.5	dirt	challenging	no	yes	yes	trail designed for mountain bike use, but open to pedestrians
Lower Foundation Trail	Hopewell Park / Danville Borough Farm	0.2	dirt	challenging	no	yes	yes	trail designed for mountain bike use, but open to pedestrians
Meadow Lark Trail	Hopewell Park / Danville Borough Farm	0.1	dirt	challenging	no	yes	yes	trail designed for mountain bike use, but open to pedestrians
Meadow Loop Trail	Hopewell Park / Danville Borough Farm	0.4	dirt	challenging	no	yes	yes	trail designed for mountain bike use, but open to pedestrians
Nikk's Big Banana Trail	Hopewell Park / Danville Borough Farm	0.2	dirt	extreme	no	yes	yes	trail designed for mountain bike use, but open to pedestrians
Old Humdinger Trail	Hopewell Park / Danville Borough Farm	0.3	dirt	challenging	no	yes	yes	trail designed for mountain bike use, but open to pedestrians
Tetanus Trail	Hopewell Park / Danville Borough Farm	0.3	dirt	challenging	no	yes	yes	trail designed for mountain bike use, but open to pedestrians
The Gut Trail	Hopewell Park / Danville Borough Farm	0.3	dirt	challenging	no	yes	yes	trail designed for mountain bike use, but open to pedestrians
Up and Out Loop	Hopewell Park / Danville Borough Farm	1.3	dirt	challenging	no	yes	yes	trail designed for mountain bike use, but open to pedestrians
Bluebird Trail	Montour Preserve	0.8	mowed grass	moderate	no	no	no	trail passes through Montour Preserve bluebird habitat and nest box area
Braille Trail	Montour Preserve	0.3	mulch / mowed grass	easy	yes	no	no	trail includes guides for the visually impaired
Chilisugi Trail	Montour Preserve	3.9	mowed grass / gravel / dirt / forest	moderate	no	no	no	trail encircles Lake Chilisiquaque
Goose Woods Trail	Montour Preserve	0.9	mulch	easy	yes	no	no	trail passes through the Montour Preserve's maple sugaring area
Hummingbird Trail	Montour Preserve	0.2	fine gravel	easy	yes	no	no	trail is wheelchair accessible and ideal for users with limited mobility
Laura Smith Trail of History	Montour Preserve	0.2	mowed grass	easy	no	no	no	trail features farmstead remnants
Ridgefield Point Loop Trail	Montour Preserve	0.7	mowed grass / forest	moderate	no	no	no	loop trail accessible from the Chilisugi Trail
Wildlife Management Trail	Montour Preserve	0.8	mowed grass / forest	moderate	no	no	no	trail passes through several wildlife habitat areas
North Branch Canal Trail	North Branch Canal Trail	6.2	mowed grass / forest	moderate	no	yes	yes	trail parallels the North Branch Susquehanna River in Montour and Columbia Counties on the former towpath of the North Branch Canal; portions of the trail are closed as of 1/5/18; contact MARC for current conditions
TRAIL DIFFICULTY LEVELS Easy: flat, level trails with stable, firm surfaces designed for all users Moderate: mostly flat trails with some short, minor elevation changes and mixed surfaces, suitable for most, but not all, users Challenging: trails with significant elevation changes, longer climbs and challenging surfaces; not suitable for users with limited mobility Extreme: trails with extreme, potentially dangerous elevation changes and surfaces; suitable for advanced users only To learn more about the Hess Recreation Area, North Branch Canal Trail, Hopewell Park / Danville Borough Farm or the Montour Preserve, please visit: www.MontourRec.com To learn more about the Geisinger Stewardship Forest, please visit: www.Geisinger.org/sites/stewardship-forest <small>REVISED 1/8/2018 BY ROBERT STOUT, DIRECTOR MARC</small>								



For copies of this report, please visit <http://montourrec.com/annual-report/>
Or contact Bob Stoudt, MARC Director, at (570) 336-2060 or RStoudt@MontourRec.com

Montour Area Recreation Commission | PO Box 456 | Danville, PA 17821

