

THE NORTH BRANCH CANAL TRAIL DANVILLE TO CATAWISSA

PROJECT STATUS AND OVERVIEW

FEBRUARY 25, 2014

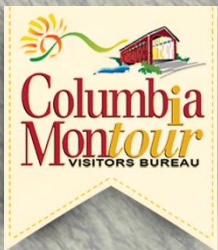


Image PA Department of Conservation and Natural Resources-PAMAP/USGS

Image © 2012 TerraMetrics
Data SIO, NOAA, U.S. Navy, NGA, GEBCO

Google earth

WELCOME AND INTRODUCTIONS



Mike Mills, Board President
Montour Area Recreation Commission



Bob Stoudt, Director
Montour Area Recreation Commission

PROJECT HISTORY AND REGIONAL PERSPECTIVE

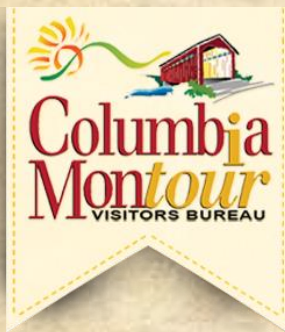


**Jerry Walls, Chairman
SEDA-COG Joint Rail Authority
Susquehanna Greenway Partnership**



**Trish Carothers, Executive Director
Susquehanna Greenway Partnership**

REGIONAL ECONOMIC IMPACT



**Otto Kurecian, Executive Director
Columbia Montour Visitors Bureau**

DANVILLE CONNECTIONS



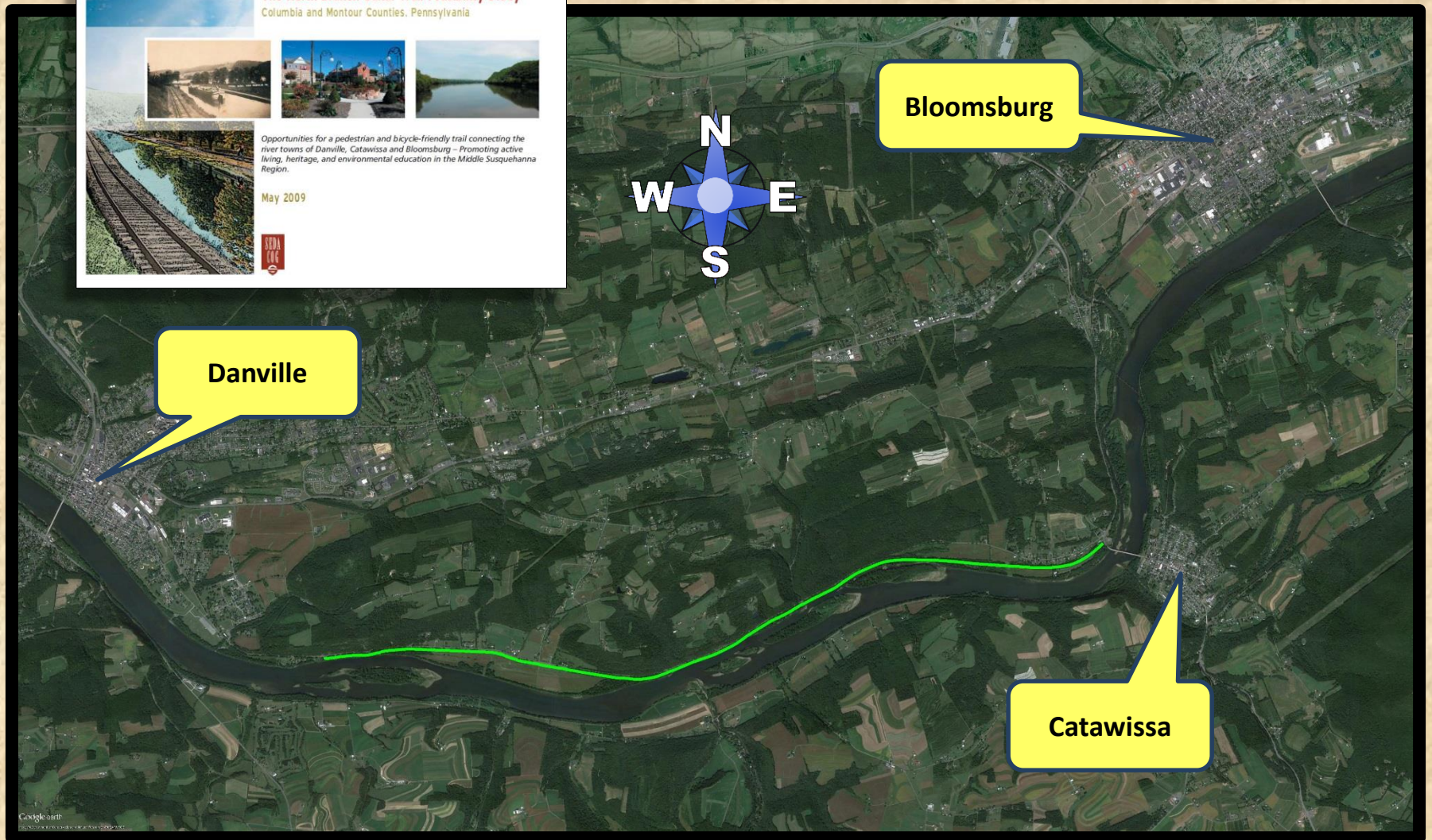
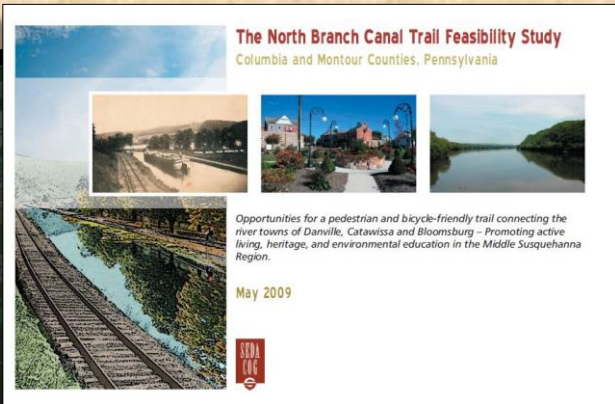
**Jim Wilson, Executive Director
Danville Business Alliance**

PROJECT HISTORY

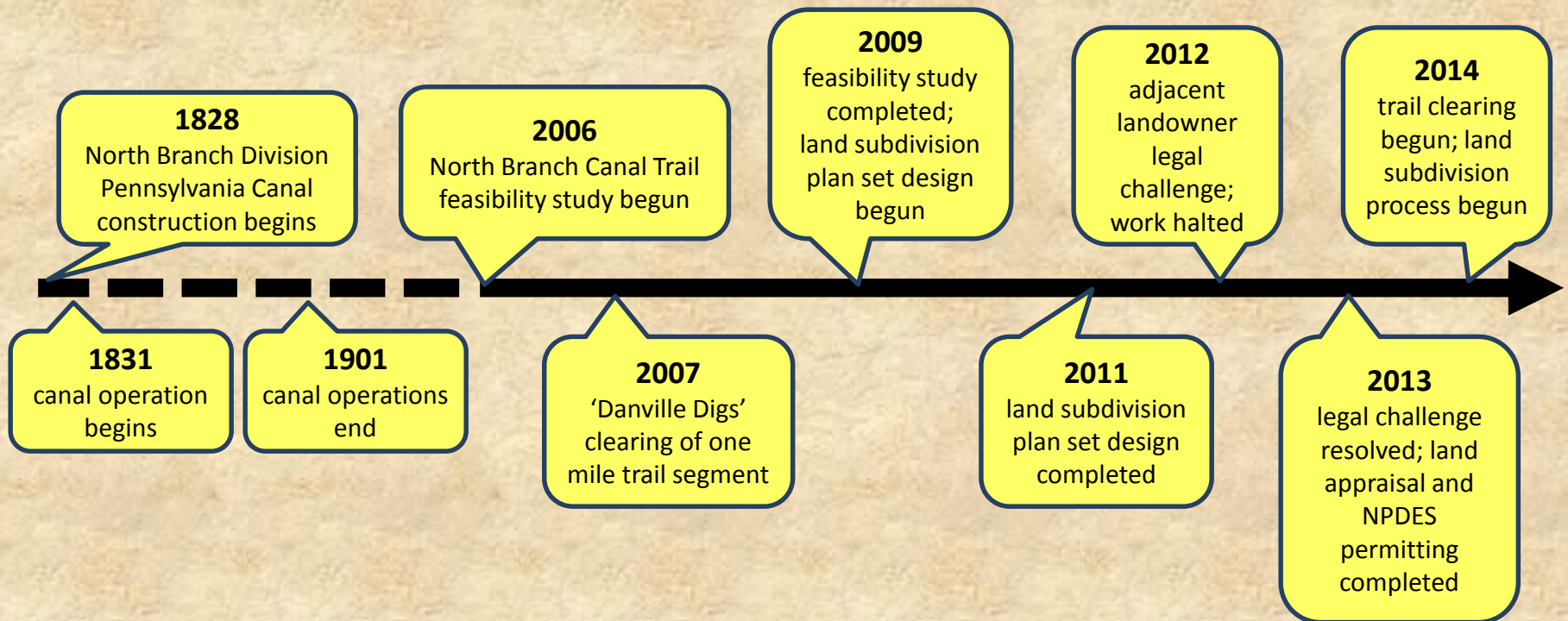


Bob Stoudt, Director
Montour Area Recreation Commission

CURRENT SCOPE OF WORK



KEY PROJECT MILESTONES



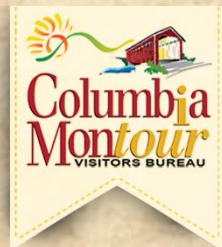
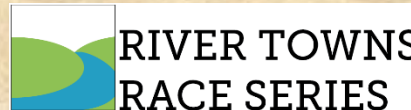
MAJOR PROJECT EXPENSES TO DATE

(all values approximated)

NORTH BRANCH CANAL TRAIL (DANVILLE TO CATAWISSA) PROJECT EXPENSES TO DATE (AS OF 2/25/14)	
Feasibility Study (Danville to Bloomsburg)	\$122,900
Land Survey	\$ 50,000
Land Subdivision Plan Set Preparation	\$ 9,500
Land Appraisal	\$ 3,500
NPDES Permitting	\$ 11,600
MARC labor (since 2010)	\$ 6,000
APPROXIMATE TOTAL TO DATE	\$203,500

PROJECT FUNDING SOURCES/DONORS TO DATE

(list may be incomplete)



Montour County

Columbia County

Commissioners' Tourism Fund

Commissioners' Tourism Fund

TRAIL DESIGN OVERVIEW



Bob Stoudt, Director
Montour Area Recreation Commission

TRAIL DESIGN

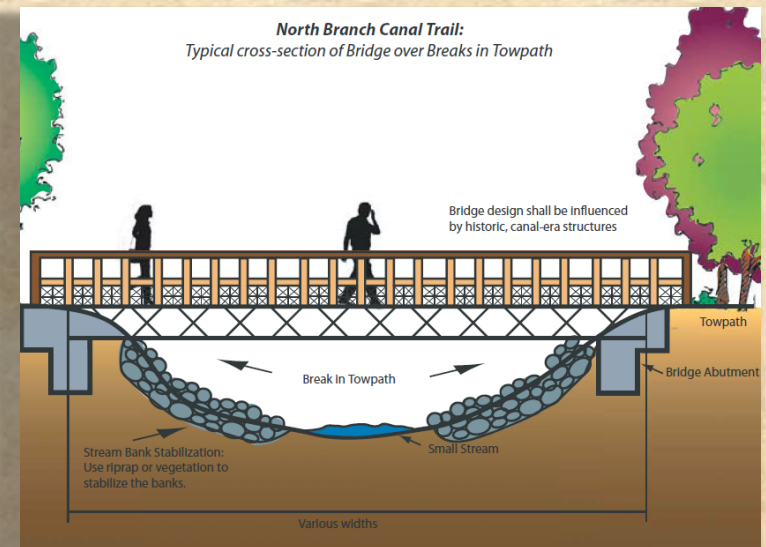
- average trail width of 5 feet, though narrower where conditions dictate
- constructed on crest of former canal towpath
- mowed grass surface along the vast majority of the trail
- compacted stone surfacing near trailheads to accommodate ADA requirements
- thermoplastic pipe culverts (14) where needed, masked by laid stone
- small bridges (4) where needed, designed to be built by volunteers at a minimal cost and in keeping with the historic canal theme
- enhancements and interpretive signage at historical and environmentally significant waypoints
- some fencing will be required where trail comes too close to railroad bed (<50ft)





BRIDGE DESIGN CONSIDERATIONS

- ADA compliant
- inexpensive
- able to be constructed by volunteers with small machinery (sites inaccessible to heavy equipment)
- designed to incorporate historic canal design elements
- constructed at highest possible elevations to minimize flooding issues



APPLICABLE ADA REGULATIONS

- per the ADA Draft Final Accessibility Guidelines for Outdoor Developed Areas, published 10/19/09, all public trail projects must comply with ADA regulations whether or not they are funded by DCNR or any other state or federal agency unless one or more of the following exceptions apply (per section 1019):

- compliance is not feasible due to terrain
- compliance cannot be accomplished with the prevailing construction practices
- compliance would fundamentally alter the function or purpose of the facility or setting
- compliance is precluded by the:
 - Endangered Species Act
 - National Environmental Policy Act
 - National Historic Preservation Act
 - Wilderness Act
 - Other Federal, State or local law the purpose of which is to preserve threatened or endangered species; the environment; or archaeological, cultural, historical, or other significant natural features

- given the landscape of the North Branch Canal Trail corridor, available funding and the wishes of both the Montour and Columbia County Commissioners, MARC recommends that the North Branch Canal Trail should be built to ADA regulations section 1017 for 'trails', not 'shared use paths' or 'hiker-biker trails'

- DCNR will consider grant funding for a project even if only a part of a trail is ADA compliant

- applicable ADA regulations can be found at: <http://www.access-board.gov/outdoor/draft-final.htm>

TRAIL CONSTRUCTION AND MAINTENANCE



Bob Stoudt, Director

Montour Area Recreation Commission



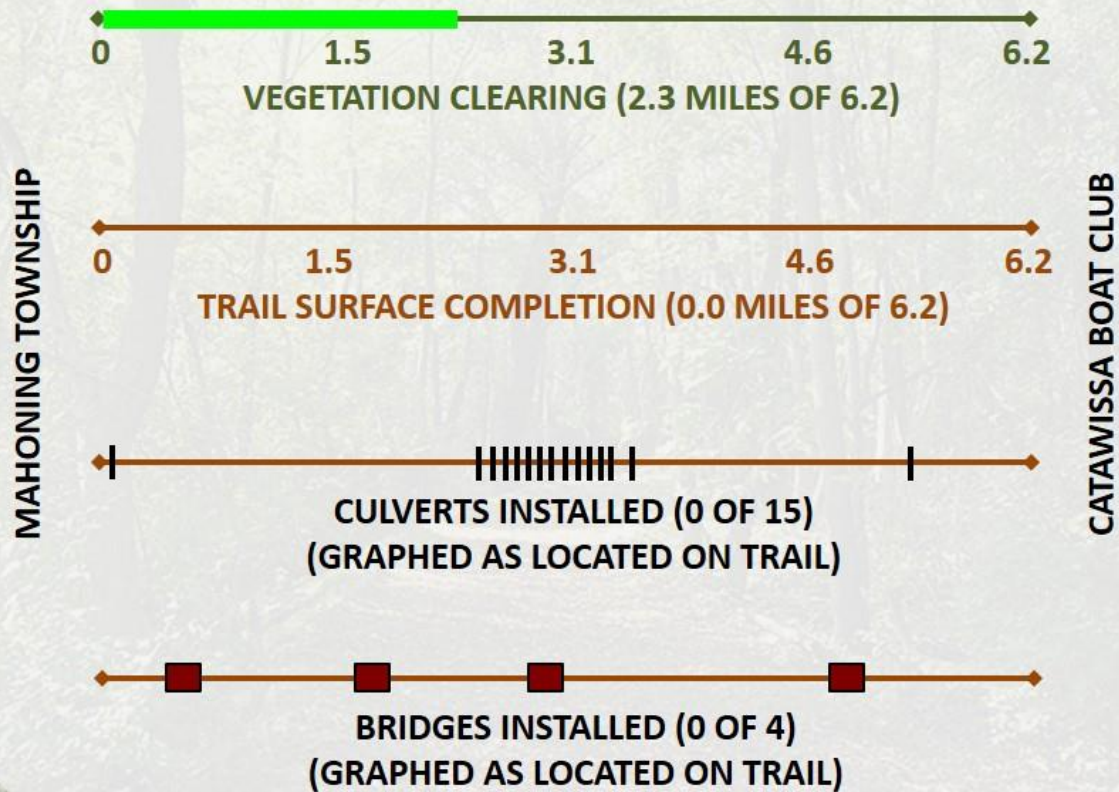
TRAIL CONSTRUCTION AND MAINTENANCE

- MARC to coordinate and lead
- community volunteers
- Scouts (non-mechanical tasks)
- 'Friends of the North Branch Canal Trail'
- paid contractors as needed for specialized tasks
- equipment rental as needed

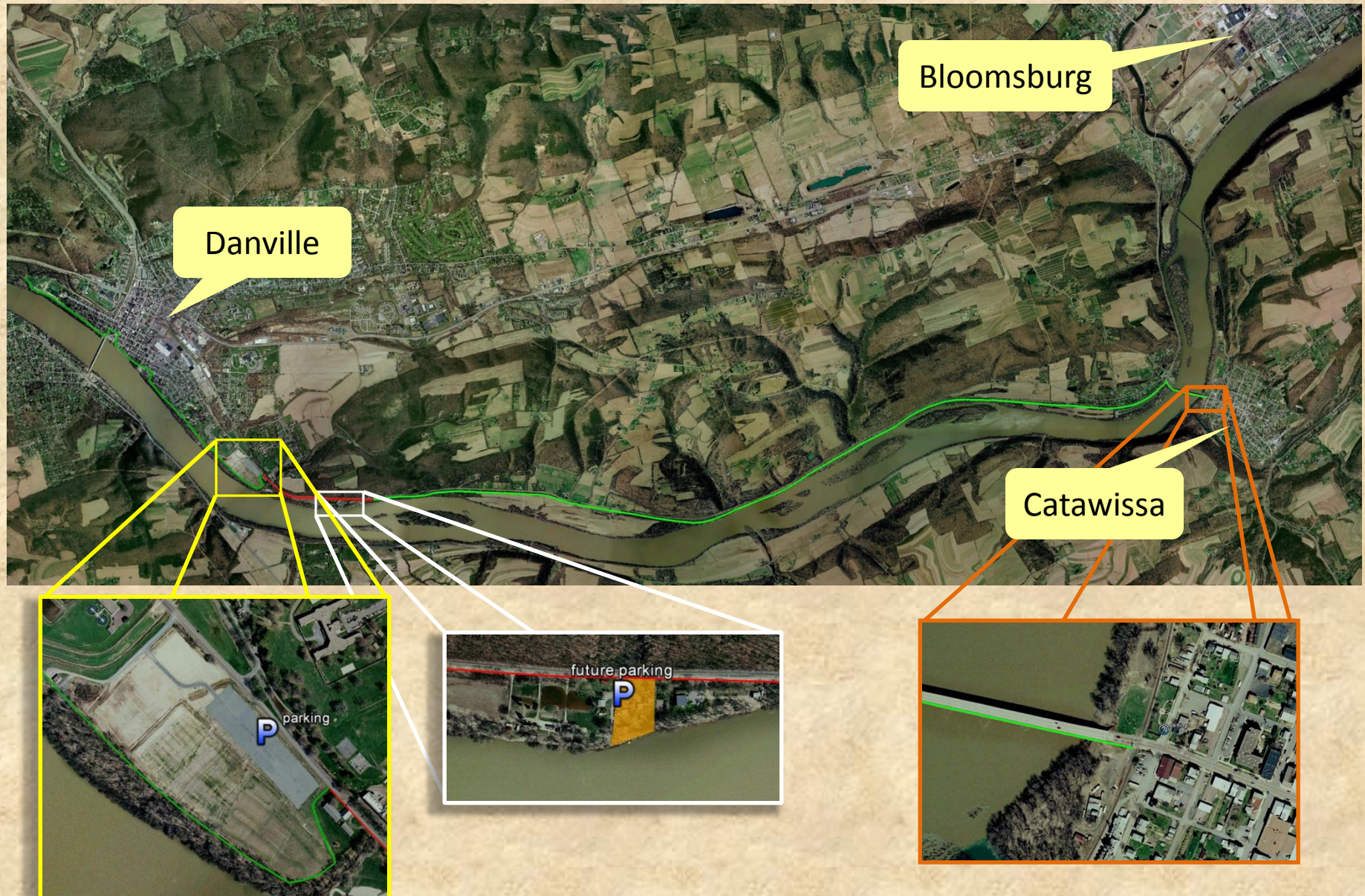


NORTH BRANCH CANAL TRAIL PROGRESS REPORT

UPDATED 2/5/14



ANTICIPATED TRAILHEAD/PARKING LOCATIONS



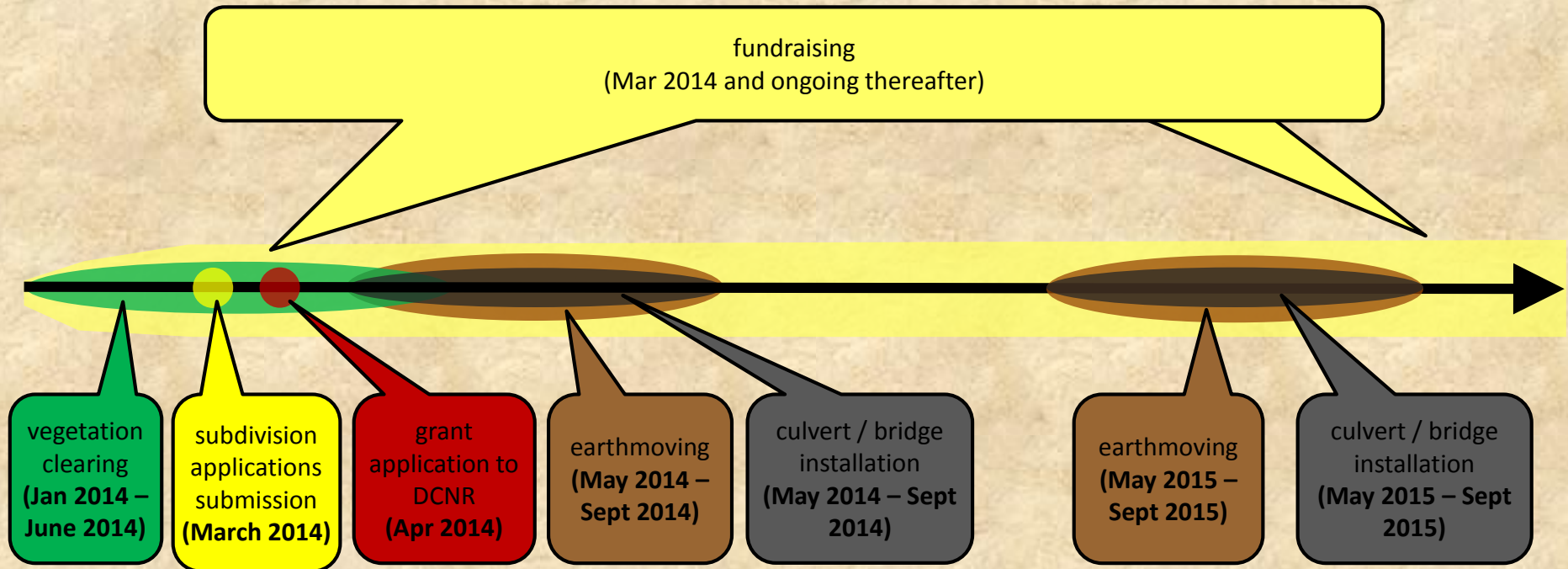
ANTICIPATED 2014/2015 PROJECT EXPENSES

(all values approximated)

NORTH BRANCH CANAL TRAIL (DANVILLE TO CATAWISSA) 2014/2015 ANTICIPATED PROJECT EXPENSES	
Land subdivision fees & expenses	\$ 2,500
Trail materials (culverts, bridges, stone, etc.)	\$100,000
Mahoning Twp. trailhead development	\$ 70,000
Engineering / permitting	\$ 10,000
MARC / contractor labor	\$ 60,000
Equipment rental	\$ 5,000
APPROXIMATE TOTAL	\$247,500

NORTH BRANCH CANAL TRAIL – DANVILLE TO CATAWISSA

2014-2015 DRAFT TIMELINE FOR CONSTRUCTION



MAP REVIEW / QUESTIONS



FOR MORE INFORMATION:

Bob Stoudt, Director Montour Area Recreation Commission

PO Box 456, Danville, PA 17821

(570) 336-2060 or MontrRec@ptd.net

http://www.MontourRec.com/marc/?page_id=4985

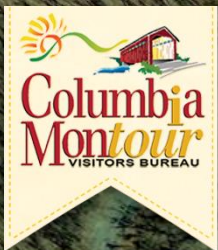


Image PA Department of Conservation and Natural Resources-PAMAP/USGS

Image © 2012 TerraMetrics
Data SIO, NOAA, U.S. Navy, NGA, GEBCO

Google