

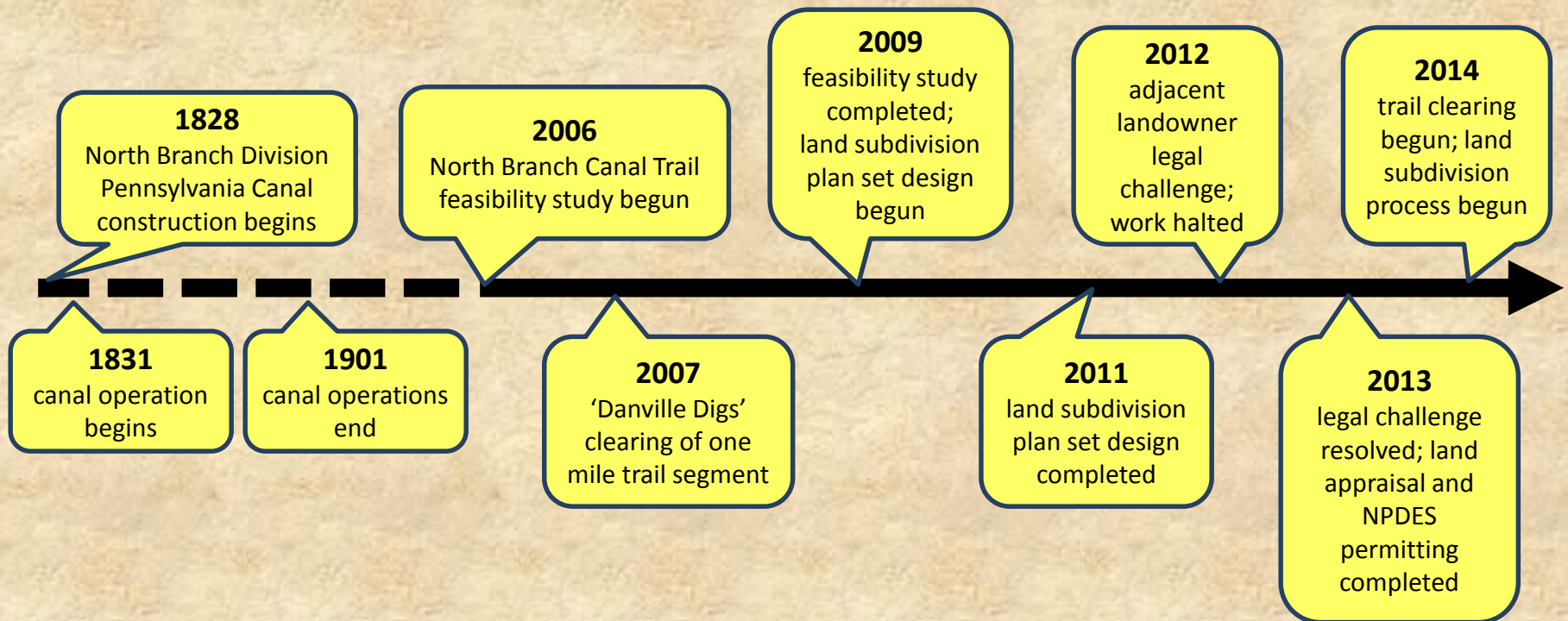
# **THE NORTH BRANCH CANAL TRAIL DANVILLE TO CATAWISSA**

**PROJECT STATUS AND OVERVIEW  
JANUARY 26, 2015**

**PRESENTED BY: BOB STOUDT, DIRECTOR**

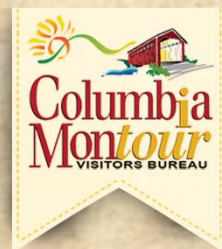
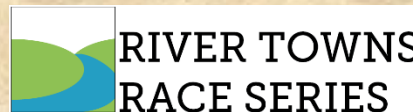


# NORTH BRANCH CANAL TRAIL KEY PROJECT MILESTONES



# PROJECT FUNDING SOURCES/DONORS TO DATE

(list may be incomplete)



Montour County

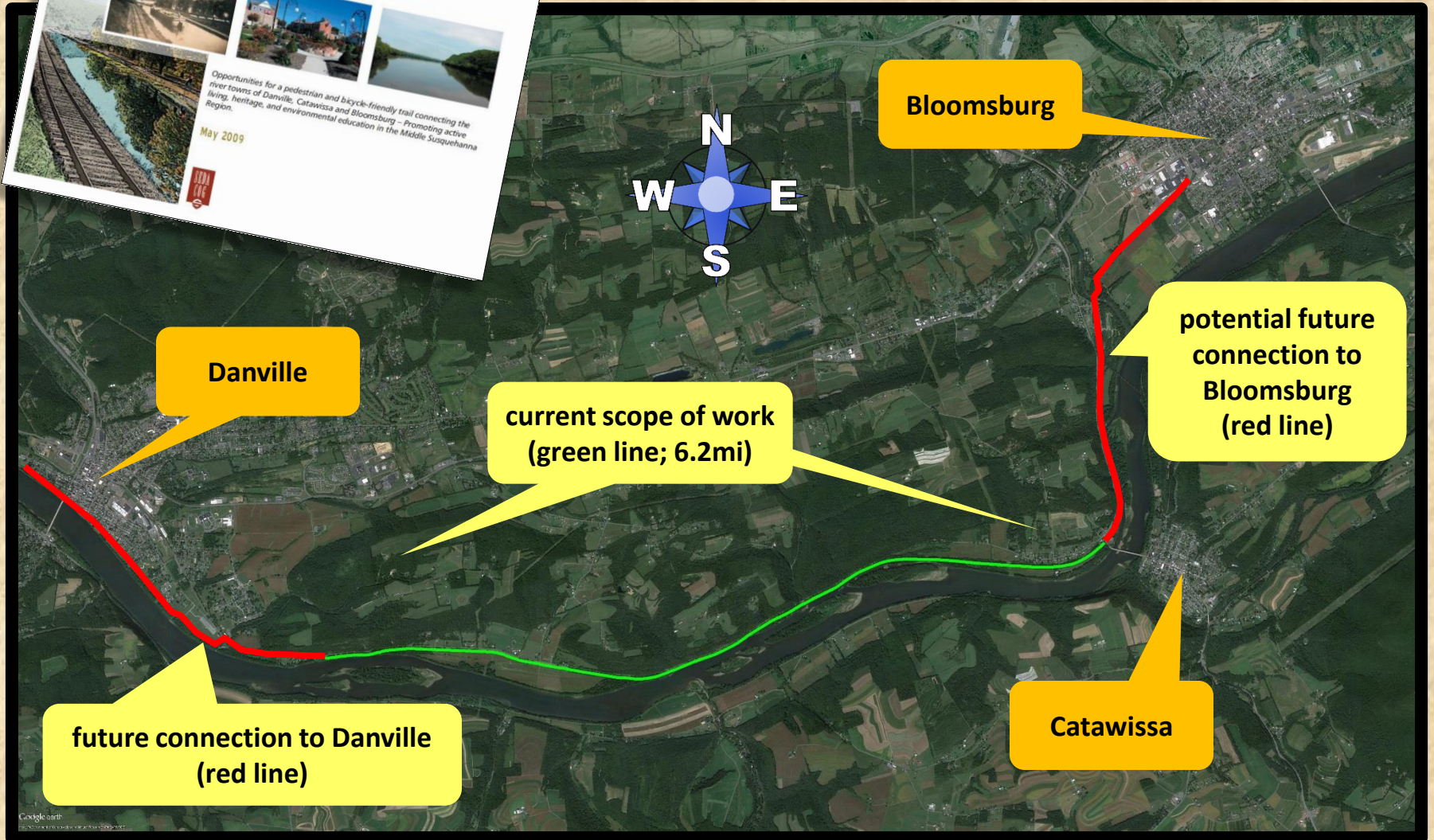
Columbia County

Commissioners' Tourism Fund

Commissioners' Tourism Fund



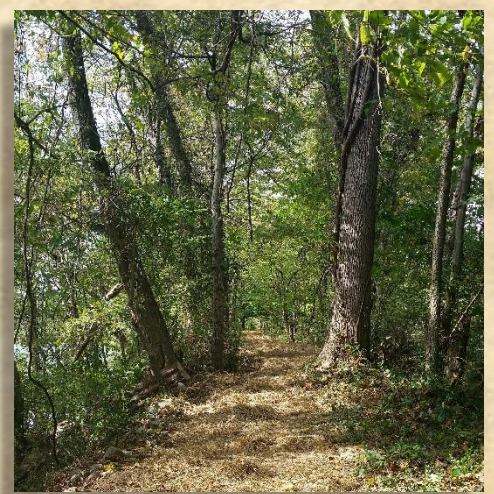
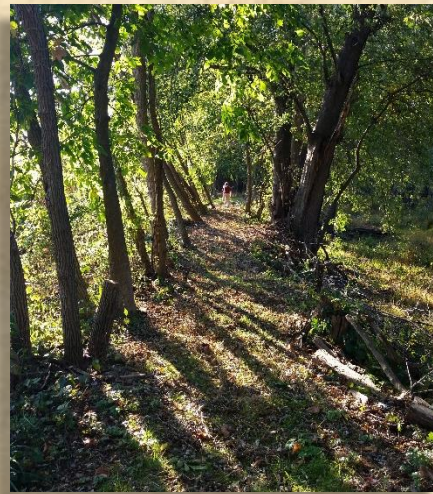
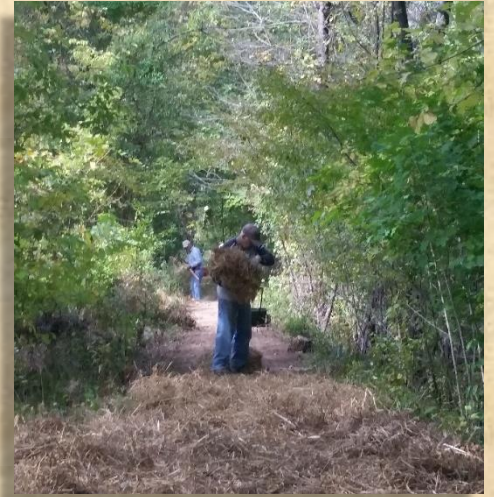
# CURRENT SCOPE OF WORK





## TRAIL DESIGN

- average trail width of 5 feet, though narrower where conditions dictate
- constructed on crest of former canal towpath
- mowed grass surface along the vast majority of the trail
- compacted stone surfacing near trailheads to accommodate ADA requirements
- thermoplastic pipe culverts (14) where needed, masked by laid stone
- small bridges (possibly 4) where needed, designed to be built by volunteers at a minimal cost and in keeping with the historic canal theme
- enhancements and interpretive signage at historical and environmentally significant waypoints
- some fencing will be required where trail comes too close to railroad bed (<50ft)







## TRAIL CONSTRUCTION AND MAINTENANCE

- MARC to coordinate and lead
- community volunteers
- Scouts (non-mechanical tasks)
- 'Friends of the North Branch Canal Trail'
- paid contractors as needed for specialized tasks
- equipment rental as needed

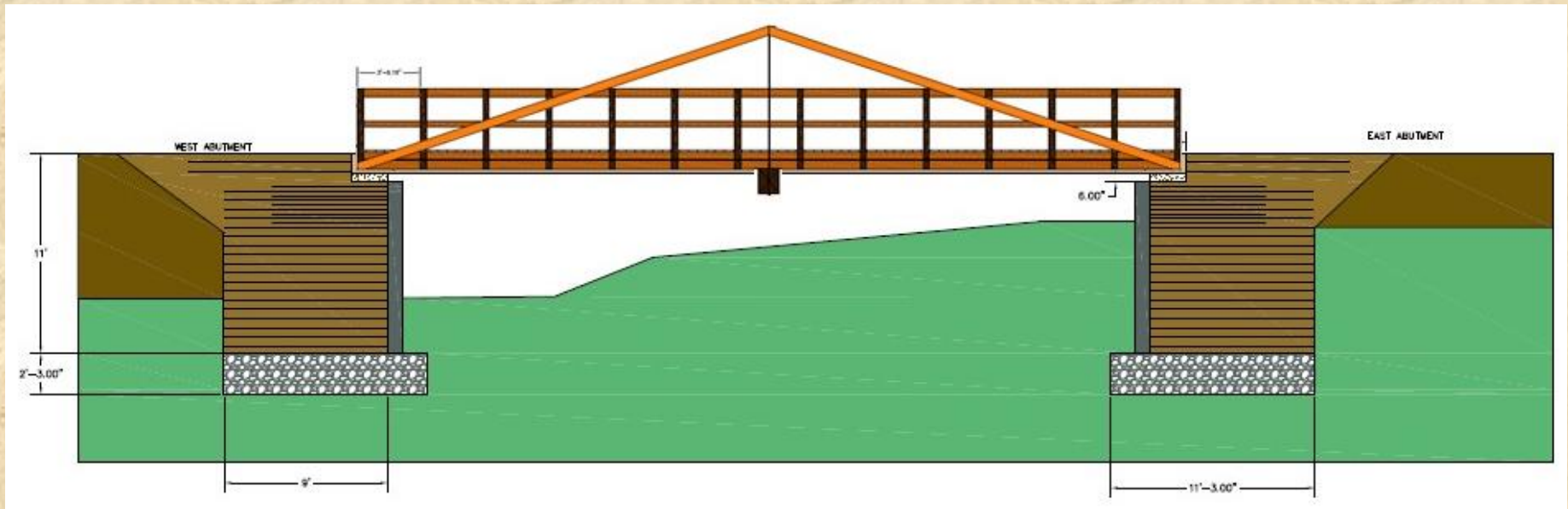






## **BRIDGE DESIGN CONSIDERATIONS**

- ADA compliant
- relatively inexpensive
- able to be constructed by volunteers with small machinery (sites inaccessible to heavy equipment)
- designed to incorporate historic canal design elements
- constructed at highest possible elevations to minimize flooding issues



# POTENTIAL CULVERT OPTION IN PLACE OF BRIDGE



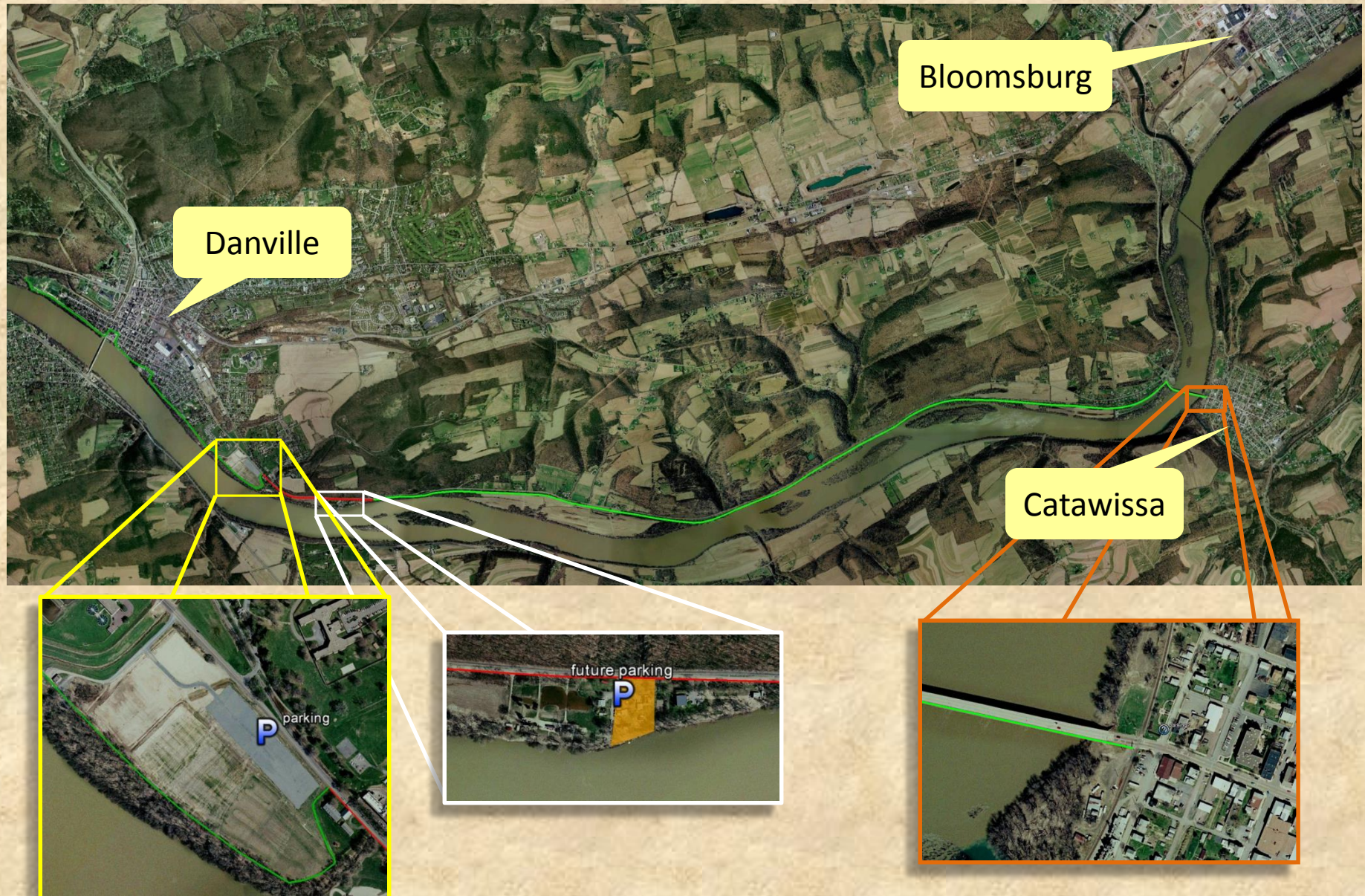
current condition – break 2



possible culvert option – break 2



# ANTICIPATED TRAILHEAD/PARKING LOCATIONS





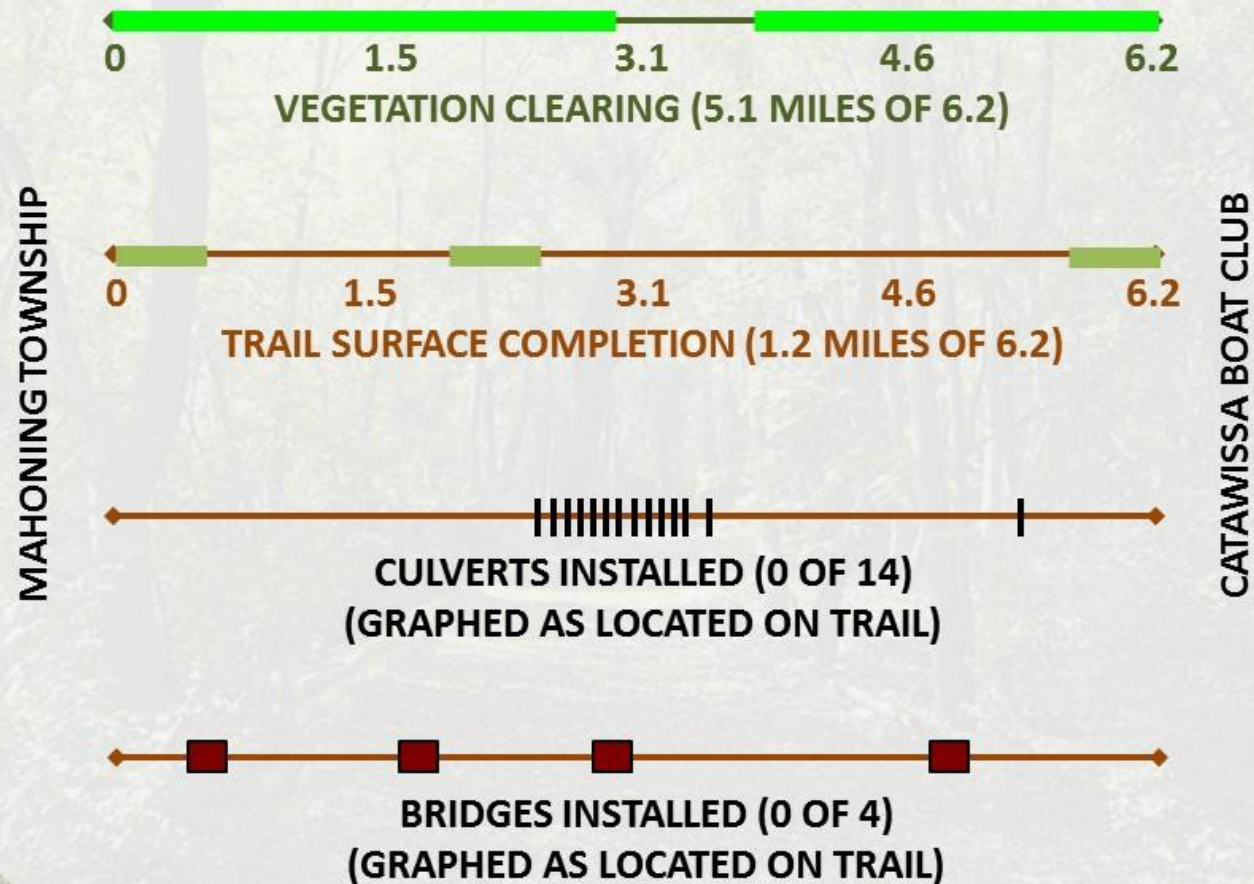
# **2014 ACCOMPLISHMENTS**

- Tax-deductible fund promoted at the Central Susquehanna Community Foundation for trail donations (fund established in 2013)
- \$10,000 in donations received (\$3,000 Luzerne Foundation – Grazia Bella Fund; \$4,500 PPL; \$2,500 Merck Cherokee)
- 5.1 miles (of 6.2 miles) of trail corridor cleared of trees and woody vegetation
- 0.95 miles (of 6.2 miles) of trail corridor graded and seeded to grass
- Land subdivision process completed in Mahoning Township and Cooper Township in Montour County; deed to be recorded in Montour County courthouse this month
- Engineering design begun on four anticipated trail bridge locations
- Engineering design begun on proposed trail connection to Danville
- Bucknell University trail bridge design completed
- Trail alignment agreement reached with adjacent landowners



# NORTH BRANCH CANAL TRAIL PROGRESS REPORT

## UPDATED 1/25/15



<b>NORTH BRANCH CANAL TRAIL (DANVILLE TO CATAWISSA) 2014 MARC EXPENSES</b>	
MARC labor (201.25 hours)	\$4,377.19
Land subdivision fees & related expenses	\$2,039.25
Miscellaneous supplies and expenses	\$1,015.22
Equipment rental	\$710.00
Mowing	\$339.20
<b>2014 TOTAL EXPENSES</b>	<b>\$8,480.86</b>

**As of 1/26/15, MARC has \$6,400 reserved for 2015 trail-related expenses**



# **2015 GOALS**

- Raise sufficient funds to enable project completion and maintenance
- Complete woody vegetation clearing on remaining 1.1 mile of corridor
- Complete grading and grass seeding on remaining 5.2 miles of corridor
- Finalize Montour County land transfer
- Submit and complete Montour Township, Columbia County land subdivision
- Purchase and install fourteen culverts
- Finalize design and permitting of up to four bridge locations; if sufficient funds can be raised, install as many bridges as possible
- Establish a 'Friends of the North Branch Canal Trail' group of volunteers to assist with trail stewardship
- Work with Eagle Scout candidates and other interested parties to create new trail amenities (benches, signs, etc.)
- With the support of a Susquehanna Greenway Partnership/DCNR grant, design, create and install a network of trail signage
- Open to the public at least a portion of the Mahoning Township corridor in spring 2015; open additional sections when ready and safe



# **SUSQUEHANNA GREENWAY / DCNR TRAIL SIGNAGE GRANT**

## **SCOPE OF WORK**

MARC's North Branch Canal Trail Signage project will involve the design, fabrication and installation of informational, interpretive and caution signage along the 6.2 mile long segment of the North Branch Canal Trail between Danville and Catawissa.

- MARC will work with adjacent landowners, law enforcement/emergency responders, local community organizations, the Susquehanna Greenway Partnership and other interested parties to design and identify locations for the signage.
- MARC will subcontract the graphic design and fabrication of the signs.
- MARC staff and volunteers will do the sign installation.





# **SUSQUEHANNA GREENWAY / DCNR TRAIL SIGNAGE GRANT**

## **ANTICIPATED PROJECT DELIVERABLES**

MARC anticipates the following types and quantities of signs:

- Three-sided trailhead kiosks (2; located at both ends of the trail)
- Mileage blades (124; one at each 0.1 mile interval along the trail)
- Caution signs (estimated 20 – 30; one at each side of trail hazards such as farm equipment crossings, driveways, steep slopes, etc.)
- Other miscellaneous signage as may be requested by concerned parties (estimated 10)
- Interpretive signage panels (estimated 3; subject to ability to generate content and budget constraints)



# **SUSQUEHANNA GREENWAY / DCNR TRAIL SIGNAGE GRANT**

## **PROJECT TIMELINE**

- November 2014 – January 2015 – meetings with concerned parties, sign design and location mapping
- February 2015 – March 2015 – sign design approvals and fabrication
- March 2015 – June 2015 – sign installation
- July 2015 – close-out reporting



# MAP REVIEW / QUESTIONS





## FOR MORE INFORMATION:

**Bob Stoudt, Director Montour Area Recreation Commission**

**PO Box 456, Danville, PA 17821**

**(570) 336-2060 or [RStoudt@MontourRec.com](mailto:RStoudt@MontourRec.com)**

**[http://www.MontourRec.com/marc/?page\\_id=4985](http://www.MontourRec.com/marc/?page_id=4985)**



Image PA Department of Conservation and Natural Resources-PAMAP/USGS

Image © 2012 TerraMetrics  
Data SIO, NOAA, U.S. Navy, NGA, GEBCO

Google